

## Anti-Phospho-SRC-Y416 antibody (STJ11100962)

STJ11100962

### GENERAL INFORMATION

<b>Product Type</b>	Primary antibodies
<b>Short Description</b>	Rabbit polyclonal antibody anti-Phospho-SRC Family-Y416 is suitable for use in Western Blot.
<b>Applications</b>	WB
<b>Host/Source</b>	Rabbit
<b>Reactivity</b>	Human, Mouse, Rat

### PRODUCT PROPERTIES

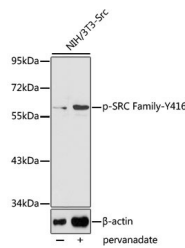
<b>Clonality</b>	Polyclonal
<b>Clone ID</b>	
<b>Concentration</b>	
<b>Conjugation</b>	Unconjugated
<b>Purification</b>	Affinity purification
<b>Dilution Range</b>	WB 1:500-1:2000
<b>Formulation</b>	PBS containing 0.02% Sodium Azide, 50% Glycerol, pH7.3.
<b>Isotype</b>	IgG
<b>Storage Instruction</b>	Store in a freezer at -20°C and avoid freeze-thaw cycles.

### TARGET INFORMATION

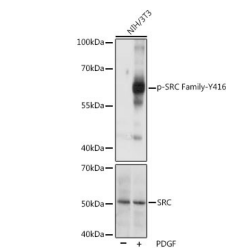
**Gene ID** [3055](#)  
[6714](#)  
[7525](#)  
[HCK](#)  
[SRC](#)

**Uniprot ID** [HCK\\_HUMAN](#)  
[SRC\\_HUMAN](#)  
[YES\\_HUMAN](#)

**Immunogen** A phospho specific peptide corresponding to residues surrounding Y416 of human SRC Family  
**Immunogen Region**  
**Specificity**  
**Immunogen Sequence**



Western blot analysis of extracts of NIH/3T3 cells, using Phospho-SRC Family-Y416 polyclonal antibody (STJ11100962) at 1:1000 dilution or SRC antibody (STJ250490). NIH/3T3 cells were treated by PDGF (100 ng/mL) at 37 °C for 30 minutes after serum-starvation overnight. Secondary antibody: HRP Goat Anti-rabbit IgG (H+L) at 1:10000 dilution. Lysates/proteins: 25ug per lane. Blocking buffer: 3% BSA. Detection: ECL Basic Kit. Exposure time: 60s.



Western blot analysis of extracts of NIH/3T3 cells, using Phospho-SRC Family-Y416 polyclonal antibody (STJ11100962) at 1:1000 dilution or SRC antibody (STJ250490). NIH/3T3 cells were treated by PDGF (100 ng/mL) at 37 °C for 30 minutes after serum-starvation overnight. Secondary antibody: HRP Goat Anti-rabbit IgG (H+L) at 1:10000 dilution. Lysates/proteins: 25ug per lane. Blocking buffer: 3% BSA. Detection: ECL Basic Kit. Exposure time: 60s.

This product is suitable for in-vitro studies under the RESEARCH USE ONLY [RUO] licence. This product must not be used as for diagnostic or other medical purposes.  
 St John's Laboratory Ltd, Knowledge Dock Business Centre, University Way, London, E16 2RD | Tel: 0208 223 3081