

Anti-DES antibody (121-470) (STJ112734)

STJ112734

GENERAL INFORMATION

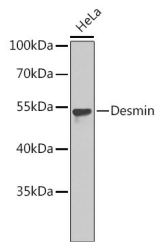
Product Type	Primary antibodies
Short Description	Rabbit polyclonal antibody anti-DES (121-470) is suitable for use in Western Blot and Immunohistochemistry.
Applications	WB, IHC
Host/Source	Rabbit
Reactivity	Human, Mouse, Rat

PRODUCT PROPERTIES

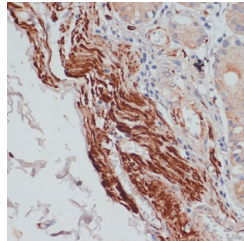
Clonality	Polyclonal
Clone ID	
Concentration	
Conjugation	Unconjugated
Purification	Affinity purification
Dilution Range	WB 1:500-1:2000 IHC 1:50-1:200
Formulation	PBS containing 0.02% Sodium Azide, 50% Glycerol, pH7.3.
Isotype	IgG
Storage Instruction	Store in a freezer at -20°C and avoid freeze-thaw cycles.

TARGET INFORMATION

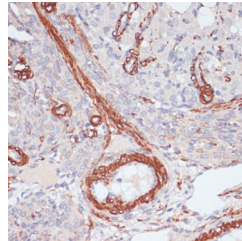
Gene ID	1674
Gene Symbol	DES
Uniprot ID	DESM_HUMAN
Immunogen	Recombinant fusion protein containing a sequence corresponding to amino acids 121-470 of human Desminin (NP_001918.3).
Immunogen Region	121-470
Specificity	
Immunogen Sequence	



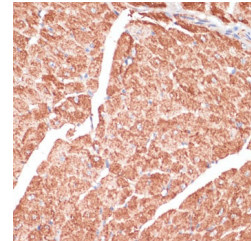
Western blot analysis of extracts of HeLa cells, using Desminin antibody (STJ112734).



Immunohistochemistry of paraffin-embedded human stomach using Desminin antibody (STJ112734) at dilution of 1:100 (40x lens).



Immunohistochemistry of paraffin-embedded rat ovary using Desminin antibody (STJ112734) at dilution of 1:100 (40x lens).



Immunohistochemistry of paraffin-embedded mouse heart using Desminin antibody (STJ112734) at dilution of 1:100 (40x lens).