

Anti-RFP antibody (STJ140001)

STJ140001

GENERAL INFORMATION

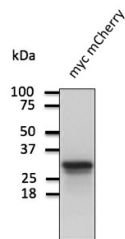
Product Type	Primary antibodies
Short Description	Goat polyclonal antibody anti-Red Fluorescent Protein is suitable for use in Western Blot, Immunohistochemistry, Immunofluorescence and Immune Electron Microscopy research applications.
Applications	WB, IHC-F, IHC-P, IF, IEM
Host/Source	Goat
Reactivity	mCherry, tdTomato, RFP

PRODUCT PROPERTIES

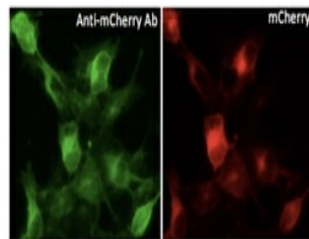
Clonality	Polyclonal
Clone ID	
Concentration	3 mg/mL
Conjugation	Unconjugated
Purification	This antibody is epitope-affinity purified from goat antiserum.
Dilution Range	WB 1:500-1:5000 IF 1:50-1:500 IHC-P 1:50-1:500 IHC-F 1:50-1:500 IEM 1:50-1:500
Formulation	PBS, 20% glycerol and 0.05% sodium azide.
Isotype	IgG
Storage	For continuous use, store at 2-8 C for one-two days. For extended storage, store in -20 C freezer. Working dilution samples should be discarded if not used within 12 hours.
Instruction	

TARGET INFORMATION

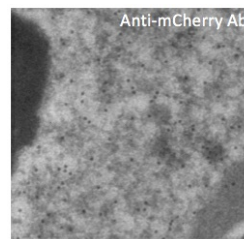
Gene ID	
Gene Symbol	
Uniprot ID	
Immunogen	Purified recombinant peptide produced in E. coli.
Immunogen Region	
Specificity	In 293HEK cells transfected with cds plasmid detects a band of 29 kDa by Western blot. This antibody recognizes very well tdTomato and does not cross-react to GFP (green fluorescent protein).
Immunogen Sequence	



Anti-mCherry antibody at 1:1000 dilution; 293HEK cells transfected with myc-mCherry Ad; lysates at 100 µg per lane; rabbit polyclonal to goat IgG (HRP) at 1:10000 dilution



Immunofluorescence - anti-mCherry antibody in 293HEK cells transfected with mCherry-Rab1a at 1:50 dilution; cells were fixed with 4% of PFA



Immunogold labeling of RPE, in vivo injected with mCherry expressing vector

This product is suitable for in-vitro studies under the RESEARCH USE ONLY [RUO] licence. This product must not be used as for diagnostic or other medical purposes.
St John's Laboratory Ltd, Knowledge Dock Business Centre, University Way, London, E16 2RD | Tel: 0208 223 3081