

Anti-GFP antibody (STJ140006)

STJ140006

GENERAL INFORMATION

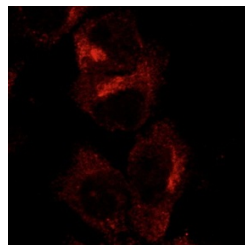
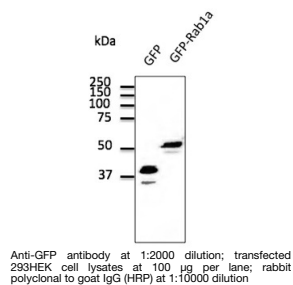
| | |
|--------------------------|---|
| Product Type | Primary antibodies |
| Short Description | Goat polyclonal antibody anti-Green Fluorescent Protein is suitable for use in Western Blot, Immunohistochemistry and Immunofluorescence research applications. |
| Applications | WB, IHC-F, IHC-P, IF |
| Host/Source | Goat |
| Reactivity | GFP |

PRODUCT PROPERTIES

| | |
|-----------------------|--|
| Clonality | Polyclonal |
| Clone ID | |
| Concentration | 3 mg/mL |
| Conjugation | Unconjugated |
| Purification | This antibody is epitope-affinity purified from goat antiserum. |
| Dilution Range | WB 1:500-1:5000 IF 1:50-1:1000 IHC-P 1:50-1:1000 IHC-F 1:50-1:1000 |
| Formulation | PBS, 20% glycerol and 0.05% sodium azide. |
| Isotype | IgG |
| Storage | For continuous use, store at 2-8 deg;C for one-two days. For extended storage, store in -20 deg;C freezer. Working dilution samples should be discarded if not used within 12 hours. |
| Instruction | |

TARGET INFORMATION

| | |
|---------------------------|--|
| Gene ID | |
| Gene Symbol | |
| Uniprot ID | |
| Immunogen | Purified recombinant peptide produced in E. coli. |
| Immunogen Region | |
| Specificity | In 293HEK cells transfected with cds plasmid detects a band of 27 kDa by Western blot. This antibody does not recognize mCherry fluorescent protein. |
| Immunogen Sequence | |



Hepa1-6 transfected with GFP-Rab1a and immunostained with GFP antibody