

## Anti-GJA1 antibody (230aa C-Term) (STJ140031)

STJ140031

### GENERAL INFORMATION

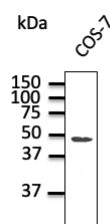
<b>Product Type</b>	Primary antibodies
<b>Short Description</b>	Goat polyclonal antibody anti-Gap junction protein, alpha 1, 43kDa (230aa C-Term) is suitable for use in Western Blot, Immunohistochemistry and Immunofluorescence research applications.
<b>Applications</b>	WB, IHC-F, IHC-P, IF
<b>Host/Source</b>	Goat
<b>Reactivity</b>	Human, Rat, Mouse, Monkey, Canine

### PRODUCT PROPERTIES

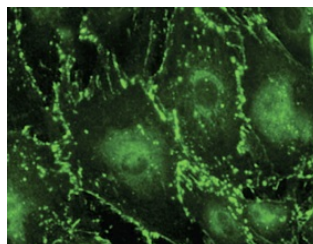
<b>Clonality</b>	Polyclonal
<b>Clone ID</b>	
<b>Concentration</b>	4 mg/mL
<b>Conjugation</b>	Unconjugated
<b>Purification</b>	This antibody is epitope-affinity purified from goat antiserum.
<b>Dilution Range</b>	WB 1:500-1:2000 IF 1:50-1:250 IHC-P 1:250-1:800 IHC-F 1:250-1:800
<b>Formulation</b>	PBS, 20% glycerol and 0.05% sodium azide.
<b>Isotype</b>	IgG
<b>Storage</b>	For continuous use, store at 2-8 C for one-two days. For extended storage, store in -20 C freezer. Working dilution samples should be discarded if not used within 12 hours.
<b>Instruction</b>	

### TARGET INFORMATION

<b>Gene ID</b>	2697
<b>Gene Symbol</b>	GJA1
<b>Uniprot ID</b>	CXA1_HUMAN
<b>Immunogen</b>	Purified recombinant peptide derived from within residues 230 aa to the C-terminus of rat CX43 produced in E. coli.
<b>Immunogen Region</b>	230aa C-Term
<b>Specificity</b>	Detects endogenous levels of total connexin 43.
<b>Immunogen Sequence</b>	



Endogenous Cx43 detected at 1:1000 dilution; lysate at 100 µg per lane and rabbit polyclonal to goat IgG (HRP) at 1:10000 dilution



Immunostaining of primary RPE cells with CX43 antibody at 1:100 dilution

This product is suitable for in-vitro studies under the RESEARCH USE ONLY [RUO] licence. This product must not be used as for diagnostic or other medical purposes.  
St John's Laboratory Ltd, Knowledge Dock Business Centre, University Way, London, E16 2RD | Tel: 0208 223 3081