

Anti-GAPDH antibody (240aa C-Term) (STJ140038)

STJ140038

GENERAL INFORMATION

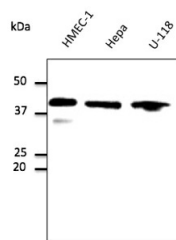
| | |
|--------------------------|---|
| Product Type | Primary antibodies |
| Short Description | Goat polyclonal antibody anti-Glyceraldehyde-3-phosphate dehydrogenase (240aa C-Term) is suitable for use in Western Blot, Immunohistochemistry and Immunofluorescence research applications. |
| Applications | WB, IHC-F, IHC-P, IF |
| Host/Source | Goat |
| Reactivity | Human, Rat, Mouse, Monkey, Canine |

PRODUCT PROPERTIES

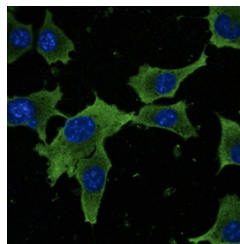
| | |
|----------------------------|--|
| Clonality | Polyclonal |
| Clone ID | |
| Concentration | 2 mg/mL |
| Conjugation | Unconjugated |
| Purification | This antibody is epitope-affinity purified from goat antiserum. |
| Dilution Range | WB 1:500-1:10 |
| Formulation | PBS, 20% glycerol and 0.05% sodium azide. |
| Isotype | IgG |
| Storage Instruction | For continuous use, store at 2-8 C for one-two days. For extended storage, store in -20 C freezer. Working dilution samples should be discarded if not used within 12 hours. |

TARGET INFORMATION

| | |
|---------------------------|---|
| Gene ID | 2597 |
| Gene Symbol | GAPDH |
| Uniprot ID | G3P_HUMAN |
| Immunogen | Purified recombinant peptide derived from within residues 240 aa to the C-terminus of human GAPDH produced in E. coli. |
| Immunogen Region | 240aa C-Term |
| Specificity | Detects a band of 37 kDa by Western blot in the following human (293A, HMEC-1, U-118, HaCat) , rat (TR-IBRB) , mouse (AtT-20, Hepa) , canine (D17) and monkey (COS-7) whole cell lysates. |
| Immunogen Sequence | |



Anti-GAPDH antibody at 1:1000 dilution; lysates at 100 µg per lane; rabbit polyclonal to goat IgG (HRP) at 1:10000 dilution



Immunofluorescence - anti-GAPDH antibody in Hepa-6 cells at 1:50 dilution; cells were fixed with methanol