

Anti-A2M antibody (1155-1474) (STJ22453)

STJ22453

GENERAL INFORMATION

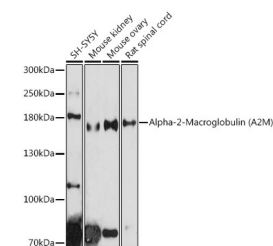
Product Type	Primary antibodies
Short Description	Rabbit polyclonal antibody anti-A2M (1155-1474) is suitable for use in Western Blot and Immunofluorescence.
Applications	WB, IF
Host/Source	Rabbit
Reactivity	Human, Mouse, Rat

PRODUCT PROPERTIES

Clonality	Polyclonal
Clone ID	
Concentration	
Conjugation	Unconjugated
Purification	Affinity purification
Dilution Range	WB 1:500-1:2000 IF 1:50-1:200
Formulation	PBS containing 0.02% Sodium Azide, 50% Glycerol, pH7.3.
Isotype	IgG
Storage Instruction	Store in a freezer at -20°C and avoid freeze-thaw cycles.

TARGET INFORMATION

Gene ID	2
Gene Symbol	A2M
Uniprot ID	A2MG_HUMAN
Immunogen	Recombinant fusion protein containing a sequence corresponding to amino acids 1155-1474 of human Alpha-2-Macroglobulin (Alpha-2-Macroglobulin (A2M)) (NP_000005.2).
Immunogen Region	1155-1474
Specificity	
Immunogen Sequence	



Western blot analysis of extracts of various cell lines, using Alpha-2-Macroglobulin (Alpha-2-Macroglobulin (A2M)) antibody (STJ22453) at 1:500 dilution. Secondary antibody: HRP Goat Anti-rabbit IgG (H+L) at 1:10000 dilution. Lysates/proteins: 25µg per lane. Blocking buffer: 3% nonfat dry milk in TBST. Detection: ECL Basic Kit. Exposure time: 60s.

This product is suitable for in-vitro studies under the RESEARCH USE ONLY [RUO] licence. This product must not be used as for diagnostic or other medical purposes.
St John's Laboratory Ltd, Knowledge Dock Business Centre, University Way, London, E16 2RD | Tel: 0208 223 3081