

Anti-ACTN1 antibody (1-330) (STJ22500)

STJ22500

GENERAL INFORMATION

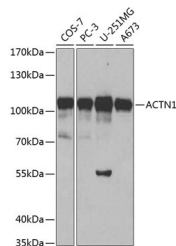
Product Type	Primary antibodies
Short Description	Rabbit polyclonal antibody anti-ACTN1 (1-330) is suitable for use in Western Blot and Immunohistochemistry.
Applications	WB, IHC
Host/Source	Rabbit
Reactivity	Human, Mouse, Monkey

PRODUCT PROPERTIES

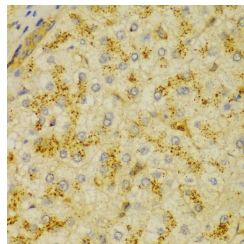
Clonality	Polyclonal
Clone ID	
Concentration	
Conjugation	Unconjugated
Purification	Affinity purification
Dilution Range	WB 1:500-1:2000 IHC 1:50-1:200
Formulation	PBS containing 0.02% Sodium Azide, 50% Glycerol, pH7.3.
Isotype	IgG
Storage Instruction	Store in a freezer at -20°C and avoid freeze-thaw cycles.

TARGET INFORMATION

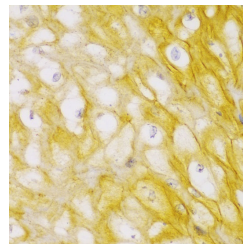
Gene ID	87
Gene Symbol	ACTN1
Uniprot ID	ACTN1_HUMAN
Immunogen	Recombinant fusion protein containing a sequence corresponding to amino acids 1-330 of human ACTN1 (NP_001123477.1).
Immunogen Region	1-330
Specificity	
Immunogen Sequence	



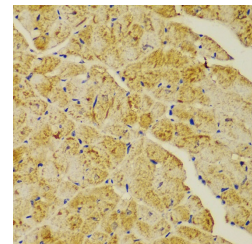
Western blot analysis of extracts of various cell lines, using ACTN1 antibody (STJ22500) at 1:500 dilution. Secondary antibody: HRP Goat Anti-rabbit IgG (H+L) at 1:10000 dilution. Lysates/proteins: 25µg per lane. Blocking buffer: 3% nonfat dry milk in TBST.



Immunohistochemistry of paraffin-embedded human liver cancer using ACTN1 antibody (STJ22500) at dilution of 1:100 (40x lens).



Immunohistochemistry of paraffin-embedded human esophagus using ACTN1 antibody (STJ22500) at dilution of 1:100 (40x lens).



Immunohistochemistry of paraffin-embedded mouse heart using ACTN1 antibody (STJ22500) at dilution of 1:100 (40x lens).

This product is suitable for in-vitro studies under the RESEARCH USE ONLY [RUO] licence. This product must not be used as for diagnostic or other medical purposes.
St John's Laboratory Ltd, Knowledge Dock Business Centre, University Way, London, E16 2RD | Tel: 0208 223 3081