

Anti-ARHGDI2 antibody (1-204) (STJ22675)

STJ22675

GENERAL INFORMATION

Product Type	Primary antibodies
Short Description	Rabbit polyclonal antibody anti-ARHGDI2 (1-204) is suitable for use in Western Blot and Immunofluorescence.
Applications	WB, IF
Host/Source	Rabbit
Reactivity	Human, Mouse, Rat

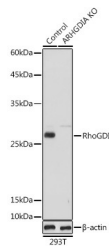
PRODUCT PROPERTIES

Clonality	Polyclonal
Clone ID	
Concentration	
Conjugation	Unconjugated
Purification	Affinity purification
Dilution Range	WB 1:500-1:2000 IF 1:50-1:200
Formulation	PBS containing 0.02% Sodium Azide, 50% Glycerol, pH7.3.
Isotype	IgG
Storage Instruction	Store in a freezer at -20°C and avoid freeze-thaw cycles.

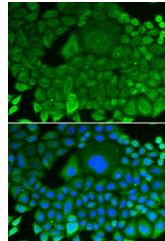
TARGET INFORMATION

Gene ID	396
Gene Symbol	ARHGDI2
Uniprot ID	GDIR1_HUMAN
Immunogen	Recombinant fusion protein containing a sequence corresponding to amino acids 1-204 of human RhoGDI (NP_001172006.1).
Immunogen Region	1-204

Specificity
Immunogen
Sequence



Western blot analysis of extracts from normal (control) and RhoGDI2 knockout (KO) 293T cells, using RhoGDI2 antibody (STJ22675) at 1:1000 dilution. Secondary antibody: HRP Goat Anti-rabbit IgG (H+L) at 1:10000 dilution. Lysates/proteins: 25µg per lane. Blocking buffer: 3% nonfat dry milk in TBST. Detection: ECL Basic Kit. Exposure time: 1s.



Immunofluorescence analysis of HeLa cells using RhoGDI2 antibody (STJ22675). Blue: DAPI for nuclear staining.

This product is suitable for in-vitro studies under the RESEARCH USE ONLY [RUO] licence. This product must not be used as for diagnostic or other medical purposes.
St John's Laboratory Ltd, Knowledge Dock Business Centre, University Way, London, E16 2RD | Tel: 0208 223 3081