

Anti-CBX5 antibody (1-191) (STJ22922)

STJ22922

GENERAL INFORMATION

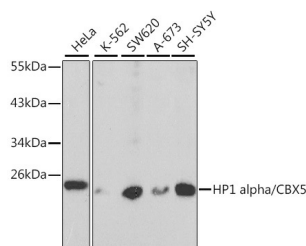
Product Type	Primary antibodies
Short Description	Rabbit polyclonal antibody anti-CBX5 (1-191) is suitable for use in Western Blot, Immunofluorescence and Immunoprecipitation.
Applications	WB, IF, IP
Host/Source	Rabbit
Reactivity	Human, Rat

PRODUCT PROPERTIES

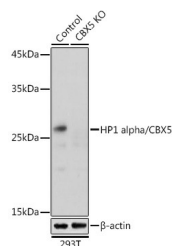
Clonality	Polyclonal
Clone ID	
Concentration	
Conjugation	Unconjugated
Purification	Affinity purification
Dilution Range	WB 1:500-1:2000 IF 1:50-1:200 IP 1:50-1:200 ChIP 1:20-1:100
Formulation	PBS containing 0.02% Sodium Azide, 50% Glycerol, pH7.3.
Isotype	IgG
Storage Instruction	Store in a freezer at -20°C and avoid freeze-thaw cycles.

TARGET INFORMATION

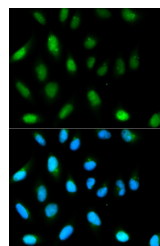
Gene ID	23468
Gene Symbol	CBX5
Uniprot ID	CBX5_HUMAN
Immunogen	Recombinant fusion protein containing a sequence corresponding to amino acids 1-191 of human HP1 alpha/HP1 alpha/CBX5 (NP_001120794.1).
Immunogen Region	1-191
Specificity	
Immunogen Sequence	



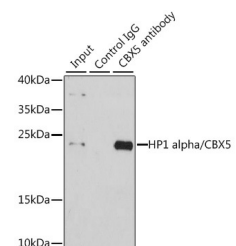
Western blot analysis of extracts of various cell lines, using HP1 alpha/HP1 alpha/CBX5 antibody (STJ22922) at 1:1000 dilution. Secondary antibody: HRP Goat Anti-rabbit IgG (H+L) at 1:10000 dilution. Lysates/proteins: 25ug per lane. Blocking buffer: 3% nonfat dry milk in TBST. Detection: ECL Basic Kit. Exposure time: 1s.



Western blot analysis of extracts from normal (control) and HP1 alpha/HP1 alpha/CBX5 rabbit polyclonal antibody knockout (KO) 293T cells, using HP1 alpha/HP1 alpha/CBX5 rabbit polyclonal antibody (STJ22922) at 1:1000 dilution. Secondary antibody: HRP Goat Anti-rabbit IgG (H+L) at 1:10000 dilution. Lysates/proteins: 25ug per lane. Blocking buffer: 3% nonfat dry milk in TBST. Detection: ECL Basic Kit. Exposure time: 1s.



Immunofluorescence analysis of HeLa cells using HP1 alpha/HP1 alpha/CBX5 antibody (STJ22922). Blue: DAPI for nuclear staining.



Immunoprecipitation analysis of 200ug extracts of HeLa cells using 1ug HP1 alpha/HP1 alpha/CBX5 antibody (STJ22922). Western blot was performed from the immunoprecipitate using HP1 alpha/HP1 alpha/CBX5 antibody (STJ22922) at a dilution of 1:1000.