

Anti-CSRP1 antibody (1-193) (STJ23248)

STJ23248

GENERAL INFORMATION

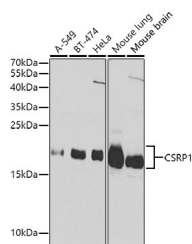
Product Type	Primary antibodies
Short Description	Rabbit polyclonal antibody anti-CSRP1 (1-193) is suitable for use in Western Blot and Immunoprecipitation.
Applications	WB, IP
Host/Source	Rabbit
Reactivity	Human, Mouse

PRODUCT PROPERTIES

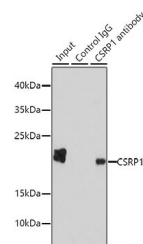
Clonality	Polyclonal
Clone ID	
Concentration	
Conjugation	Unconjugated
Purification	Affinity purification
Dilution Range	WB 1:500-1:2000 IP 1:50-1:200 RIP 1:20-1:50
Formulation	PBS containing 0.02% Sodium Azide, 50% Glycerol, pH7.3.
Isotype	IgG
Storage Instruction	Store in a freezer at -20°C and avoid freeze-thaw cycles.

TARGET INFORMATION

Gene ID	1465
Gene Symbol	CSRP1
Uniprot ID	CSRP1_HUMAN
Immunogen	Recombinant fusion protein containing a sequence corresponding to amino acids 1-193 of human CSRP1 (NP_004069.1).
Immunogen Region	1-193
Specificity	
Immunogen Sequence	



Western blot analysis of extracts of various cell lines, using CSRP1 Antibody (STJ23248) at 1:1000 dilution. Secondary antibody: HRP Goat Anti-rabbit IgG (H+L) at 1:10000 dilution. Lysates/proteins: 25µg per lane. Blocking buffer: 3% nonfat dry milk in TBST. Detection: ECL Basic Kit.



Immunoprecipitation analysis of 200µg extracts of HepG2 cells using 1µg CSRP1 antibody (STJ23248). Western blot was performed from the immunoprecipitate using CSRP1 antibody (STJ23248) at a dilution of 1:1000.

This product is suitable for in-vitro studies under the RESEARCH USE ONLY [RUO] licence. This product must not be used as for diagnostic or other medical purposes.
St John's Laboratory Ltd, Knowledge Dock Business Centre, University Way, London, E16 2RD | Tel: 0208 223 3081