

Anti-ERBB4 antibody (26-160) (STJ27886)

STJ27886

GENERAL INFORMATION

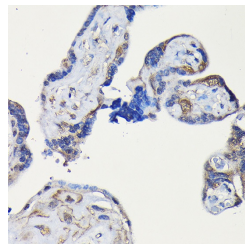
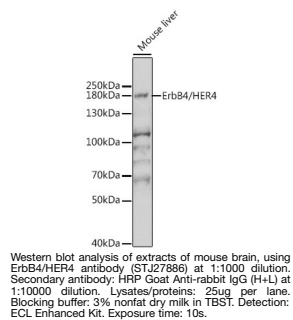
Product Type	Primary antibodies
Short Description	Rabbit polyclonal antibody anti-ERBB4 (26-160) is suitable for use in Western Blot, Immunohistochemistry and Immunofluorescence.
Applications	WB, IHC, IF
Host/Source	Rabbit
Reactivity	Human, Mouse, Rat

PRODUCT PROPERTIES

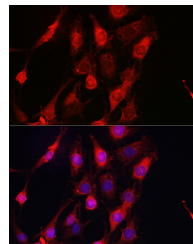
Clonality	Polyclonal
Clone ID	
Concentration	
Conjugation	Unconjugated
Purification	Affinity purification
Dilution Range	WB 1:500-1:1000 IHC 1:50-1:100 IF 1:50-1:100
Formulation	PBS containing 0.02% Sodium Azide, 50% Glycerol, pH7.3.
Isotype	IgG
Storage Instruction	Store in a freezer at -20°C and avoid freeze-thaw cycles.

TARGET INFORMATION

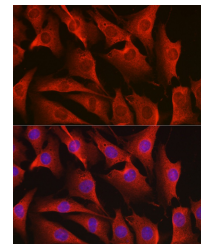
Gene ID	2066
Gene Symbol	ERBB4
Uniprot ID	ERBB4_HUMAN
Immunogen	Recombinant fusion protein containing a sequence corresponding to amino acids 26-160 of human ErbB4/HER4 (NP_005226.1).
Immunogen Region	26-160
Specificity	
Immunogen Sequence	



Immunohistochemistry of paraffin-embedded human placenta using ErbB4/HER4 rabbit polyclonal antibody (STJ27886) at dilution of 1:100 (40x lens).



Immunofluorescence analysis of C6 cells using ErbB4/HER4 rabbit polyclonal antibody (STJ27886) at dilution of 1:100 (40x lens). Blue: DAPI for nuclear staining.



Immunofluorescence analysis of NIH-3T3 cells using ErbB4/HER4 rabbit polyclonal antibody (STJ27886) at dilution of 1:100 (40x lens). Blue: DAPI for nuclear staining.