

Anti-BTAF1 antibody (1600-1849) (STJ28374)

STJ28374

GENERAL INFORMATION

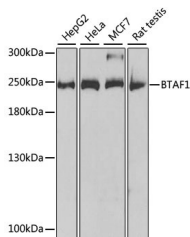
Product Type	Primary antibodies
Short Description	Rabbit polyclonal antibody anti-BTAF1 (1600-1849) is suitable for use in Western Blot, Immunohistochemistry and Immunoprecipitation.
Applications	WB, IHC, IP
Host/Source	Rabbit
Reactivity	Human, Rat

PRODUCT PROPERTIES

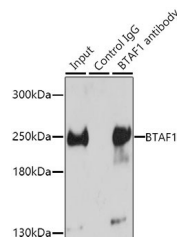
Clonality	Polyclonal
Clone ID	
Concentration	
Conjugation	Unconjugated
Purification	Affinity purification
Dilution Range	WB 1:500-1:2000 IHC 1:50-1:200 IP 1:20-1:50 ChIP 1:20-1:100
Formulation	PBS containing 0.02% Sodium Azide, 50% Glycerol, pH7.3.
Isotype	IgG
Storage Instruction	Store in a freezer at -20°C and avoid freeze-thaw cycles.

TARGET INFORMATION

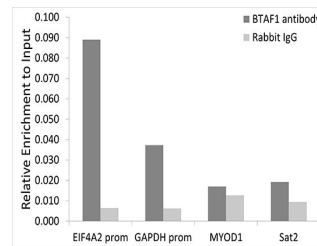
Gene ID	9044
Gene Symbol	BTAF1
Uniprot ID	BTAF1_HUMAN
Immunogen	Recombinant fusion protein containing a sequence corresponding to amino acids 1600-1849 of human BTAF1 (NP_003963.1).
Immunogen Region	1600-1849
Specificity	
Immunogen Sequence	



Western blot analysis of extracts of various cell lines, using BTAF1 antibody (STJ28374) at 1:1000 dilution. Secondary antibody: HRP Goat Anti-rabbit IgG (H+L) at 1:10000 dilution. Lysates/proteins: 25µg per lane. Blocking buffer: 3% nonfat dry milk in TBST. Detection: ECL Basic Kit.



Immunoprecipitation analysis of 150µg extracts of HeLa cells using 3µg BTAF1 antibody (STJ28374). Western blot was performed from the immunoprecipitate using BTAF1 antibody (STJ28374) at a dilution of 1:500.



Chromatin immunoprecipitation analysis of extracts of HeLa cells, using BTAF1 antibody (STJ28374) and rabbit IgG. The amount of immunoprecipitated DNA was checked by quantitative PCR. Histogram was constructed by the ratios of the immunoprecipitated DNA to the input.

This product is suitable for in-vitro studies under the RESEARCH USE ONLY [RUO] licence. This product must not be used as for diagnostic or other medical purposes.
 St John's Laboratory Ltd, Knowledge Dock Business Centre, University Way, London, E16 2RD | Tel: 0208 223 3081