

Anti-SLC2A1 antibody (210-310) (STJ29062)

STJ29062

GENERAL INFORMATION

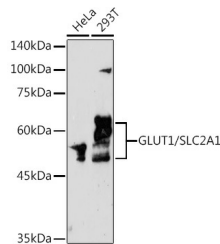
Product Type	Primary antibodies
Short Description	Rabbit polyclonal antibody anti-GLUT1 (210-310) is suitable for use in Western Blot and Immunohistochemistry.
Applications	WB, IHC
Host/Source	Rabbit
Reactivity	Human, Mouse, Rat

PRODUCT PROPERTIES

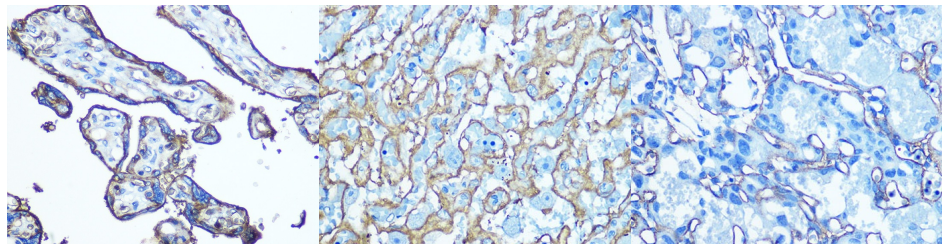
Clonality	Polyclonal
Clone ID	
Concentration	
Conjugation	Unconjugated
Purification	Affinity purification
Dilution Range	WB 1:500-1:2000 IHC 1:50-1:200
Formulation	PBS containing 0.02% Sodium Azide, 50% Glycerol, pH7.3.
Isotype	IgG
Storage Instruction	Store in a freezer at -20°C and avoid freeze-thaw cycles.

TARGET INFORMATION

Gene ID	6513
Gene Symbol	SLC2A1
Uniprot ID	GTR1_HUMAN
Immunogen	Recombinant fusion protein containing a sequence corresponding to amino acids 210-310 of human GLUT1/SLC2A1 (NP_006507.2).
Immunogen Region	210-310
Specificity	
Immunogen Sequence	



Western blot analysis of extracts of various cell lines, using GLUT1/SLC2A1 rabbit polyclonal antibody (STJ29062) at 1:1000 dilution. Secondary antibody: HRP Goat Anti-rabbit IgG (H+L) at 1:10000 dilution. Lysates/proteins: 25ug per lane. Blocking buffer: 3% nonfat dry milk in TBST. Detection: ECL Enhanced Kit. Exposure time: 180s.



Immunohistochemistry of paraffin-embedded Human placenta using GLUT1/SLC2A1 antibody (STJ29062) at dilution of 1:100 (40x lens).

Immunohistochemistry of paraffin-embedded Rat placenta using GLUT1/SLC2A1 antibody (STJ29062) at dilution of 1:100 (40x lens).

Immunohistochemistry of paraffin-embedded mouse placenta using GLUT1/SLC2A1 antibody (STJ29062) at dilution of 1:100 (40x lens).

This product is suitable for in-vitro studies under the RESEARCH USE ONLY [RUO] licence. This product must not be used as for diagnostic or other medical purposes.

St John's Laboratory Ltd, Knowledge Dock Business Centre, University Way, London, E16 2RD | Tel: 0208 223 3081