

Anti-RAB31 antibody (1-195) (STJ29642)

STJ29642

GENERAL INFORMATION

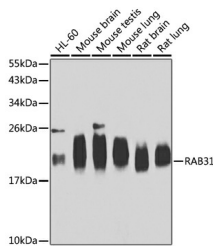
| | |
|--------------------------|--|
| Product Type | Primary antibodies |
| Short Description | Rabbit polyclonal antibody anti-RAB31 (1-195) is suitable for use in Western Blot. |
| Applications | WB |
| Host/Source | Rabbit |
| Reactivity | Human, Mouse, Rat |

PRODUCT PROPERTIES

| | |
|----------------------------|---|
| Clonality | Polyclonal |
| Clone ID | |
| Concentration | |
| Conjugation | Unconjugated |
| Purification | Affinity purification |
| Dilution Range | WB 1:500-1:2000 |
| Formulation | PBS containing 0.02% Sodium Azide, 50% Glycerol, pH7.3. |
| Isotype | IgG |
| Storage Instruction | Store in a freezer at -20°C and avoid freeze-thaw cycles. |

TARGET INFORMATION

| | |
|---------------------------|---|
| Gene ID | 11031 |
| Gene Symbol | RAB31 |
| Uniprot ID | RAB31_HUMAN |
| Immunogen | Recombinant fusion protein containing a sequence corresponding to amino acids 1-195 of human RAB31 (NP_006859.2). |
| Immunogen Region | 1-195 |
| Specificity | |
| Immunogen Sequence | |



Western blot analysis of extracts of various cell lines, using RAB31 antibody (STJ29642) at 1:1000 dilution. Secondary antibody: HRP Goat Anti-rabbit IgG (H+L) at 1:10000 dilution. Lysates/proteins: 25µg per lane. Blocking buffer: 3% nonfat dry milk in TBST. Detection: ECL Basic Kit. Exposure time: 30s.