

Anti-Cleaved-CASP1-D210 antibody (130-210 Internal) (STJ90001)

STJ90001

GENERAL INFORMATION

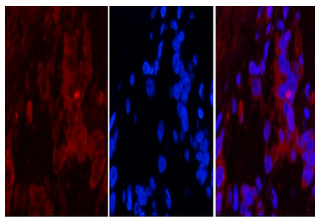
Product Type	Primary antibodies
Short Description	Rabbit polyclonal antibody anti-Cleaved-Caspase-1-D210 (130-210 Internal) is suitable for use in Western Blot, Immunofluorescence, Immunocytochemistry, Immunohistochemistry and ELISA research applications.
Applications	WB, IF, ICC, IHC-P, ELISA
Host/Source	Rabbit
Reactivity	Human, Mouse, Rat

PRODUCT PROPERTIES

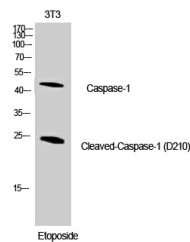
Clonality	Polyclonal
Clone ID	
Concentration	1 mg/mL
Conjugation	Unconjugated
Purification	The antibody was affinity-purified from rabbit anti-serum by affinity-chromatography.
Dilution	WB 1:500-2000
Range	IHC-P 1:50-300 IF 1:50-300
Formulation	PBS, 50% Glycerol, 0.5% BSA and 0.02% Sodium Azide.
Isotype	IgG
Storage Instruction	Store at -20°C for up to 1 year from the date of receipt, and avoid repeat freeze-thaw cycles.

TARGET INFORMATION

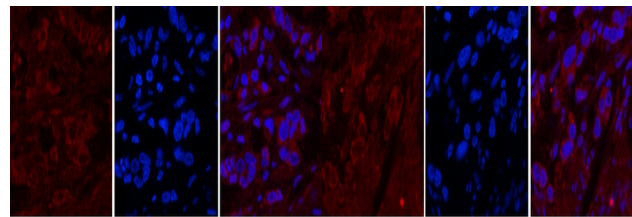
Gene ID	834
Gene Symbol	CASP1
Uniprot ID	CASP1_HUMAN
Immunogen	The antiserum was produced against synthesized peptide derived from human Caspase-1 at amino acid range 161-210
Immunogen Region	130-210 Internal
Specificity	Cleaved-CASP1-D210 polyclonal antibody (Caspase-1) binds to endogenous Caspase-1 at the amino acid region 130-210 Internal.
Immunogen Sequence	



Immunofluorescence analysis of Human-stomach-cancer tissue. 1, Cleaved-Caspase-1 (D210) Polyclonal Antibody (red) was diluted at 1:200 (4°C, overnight). 2, Cy3 labeled Secondary antibody was diluted at 1:300 (room temperature, 50min).3, Picture B: DAPI (blue) 10min. Picture A:Target. Picture B: DAPI. Picture C: merge of A+B



Western blot analysis of NIH-3T3 cells using Cleaved-Caspase-1 (D210) Polyclonal Antibody diluted at 1:1000



Immunofluorescence analysis of Human-stomach-cancer tissue. 1, Cleaved-Caspase-1 (D210) Polyclonal Antibody (red) was diluted at 1:200 (4°C, overnight). 2, Cy3 labeled Secondary antibody was diluted at 1:300 (room temperature, 50min).3, Picture B: DAPI (blue) 10min. Picture A:Target. Picture B: DAPI. Picture C: merge of A+B

Immunofluorescence analysis of Human-stomach-cancer tissue. 1, Cleaved-Caspase-1 (D210) Polyclonal Antibody (red) was diluted at 1:200 (4°C, overnight). 2, Cy3 labeled Secondary antibody was diluted at 1:300 (room temperature, 50min).3, Picture B: DAPI (blue) 10min. Picture A:Target. Picture B: DAPI. Picture C: merge of A+B

This product is suitable for in-vitro studies under the RESEARCH USE ONLY [RUO] licence. This product must not be used as for diagnostic or other medical purposes.
St John's Laboratory Ltd, Knowledge Dock Business Centre, University Way, London, E16 2RD | Tel: 0208 223 3081