

Anti-Phospho-PRKD2-Ser876 antibody (810-890) (STJ90501)

STJ90501

GENERAL INFORMATION

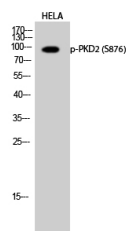
Product Type	Primary antibodies
Short Description	Rabbit polyclonal antibody anti-Phospho-Serine/Threonine-Protein Kinase D2-Ser876 (810-890) is suitable for use in Western Blot, Immunohistochemistry, Immunofluorescence and ELISA research applications.
Applications	WB, IHC-P, IF-P, ELISA
Host/Source	Rabbit
Reactivity	Human, Mouse, Rat

PRODUCT PROPERTIES

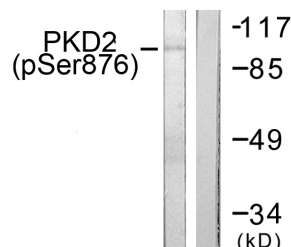
Clonality	Polyclonal
Clone ID	
Concentration	1 mg/mL
Conjugation	Unconjugated
Purification	The antibody was affinity-purified from rabbit anti-serum by affinity-chromatography.
Dilution Range	WB 1:500-1:2000 IHC 1:100-1:300 ELISA 1:40000
Formulation	PBS, 50% Glycerol, 0.5% BSA and 0.02% Sodium Azide.
Isotype	IgG
Storage Instruction	Store at -20°C for up to 1 year from the date of receipt, and avoid repeat freeze-thaw cycles.

TARGET INFORMATION

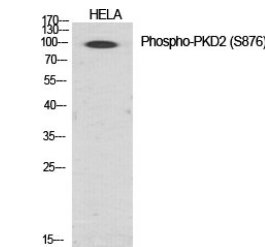
Gene ID	25865
Gene Symbol	PRKD2
Uniprot ID	KPCD2_HUMAN
Immunogen	The antiserum was produced against synthesized peptide derived from human PKD2 around the phosphorylation site of Ser876 at amino acid range 829-878
Immunogen Region	810-890
Specificity	Phospho-PRKD2-Ser876 polyclonal antibody (Serine/Threonine-Protein Kinase D2) binds to endogenous Serine/Threonine-Protein Kinase D2 at the amino acid region 810-890 only when phosphorylated at Ser876.
Immunogen Sequence	



Western blot analysis of HELA cells using Phospho-PKD2 (S876) Polyclonal Antibody diluted at 1: 1000



Western blot analysis of lysates from NIH/3T3 cells treated with PMA 250ng/ml 15', using PKD2 (Phospho-Ser876) Antibody. The lane on the right is blocked with the phospho peptide.



Western blot analysis of various cells using Phospho-PKD2 (S876) Polyclonal Antibody diluted at 1: 1000

This product is suitable for in-vitro studies under the RESEARCH USE ONLY [RUO] licence. This product must not be used as for diagnostic or other medical purposes.
St John's Laboratory Ltd, Knowledge Dock Business Centre, University Way, London, E16 2RD | Tel: 0208 223 3081