

Anti-Phospho-DAB1-Tyr232 antibody (170-250) (STJ90682)

STJ90682

GENERAL INFORMATION

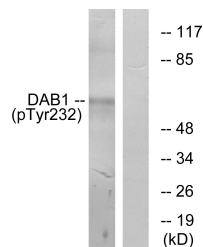
Product Type	Primary antibodies
Short Description	Rabbit polyclonal antibody anti-Phospho-Disabled Homolog 1-Tyr232 (170-250) is suitable for use in Western Blot, Immunofluorescence, Immunocytochemistry and ELISA research applications.
Applications	WB, IF, ICC, ELISA
Host/Source	Rabbit
Reactivity	Human, Mouse, Rat

PRODUCT PROPERTIES

Clonality	Polyclonal
Clone ID	
Concentration	1 mg/mL
Conjugation	Unconjugated
Purification	The antibody was affinity-purified from rabbit anti-serum by affinity-chromatography.
Dilution Range	WB 1:500-1:2000 IF 1:200-1:1000 ELISA 1:20000
Formulation	PBS, 50% Glycerol, 0.5% BSA and 0.02% Sodium Azide.
Isotype	IgG
Storage Instruction	Store at -20°C for up to 1 year from the date of receipt, and avoid repeat freeze-thaw cycles.

TARGET INFORMATION

Gene ID	1600
Gene Symbol	DAB1
Uniprot ID	DAB1_HUMAN
Immunogen	The antiserum was produced against synthesized peptide derived from human Dab1 around the phosphorylation site of Tyr232 at amino acid range 199-248
Immunogen Region	170-250
Specificity	Phospho-DAB1-Tyr232 polyclonal antibody (Disabled Homolog 1) binds to endogenous Disabled Homolog 1 at the amino acid region 170-250 only when phosphorylated at Tyr232.
Immunogen Sequence	



Western blot analysis of lysates from LOVO cells, using Dab1 (Phospho-Tyr232) Antibody. The lane on the right is blocked with the phospho peptide.