

Anti-Phospho-EIF4EBP1-Ser65 antibody (40-120) (STJ90778)

STJ90778

GENERAL INFORMATION

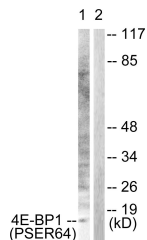
| | |
|--------------------------|---|
| Product Type | Primary antibodies |
| Short Description | Rabbit polyclonal antibody anti-Phospho-Eukaryotic Translation Initiation Factor 4e-Binding Protein 1-Ser65 (40-120) is suitable for use in Western Blot, Immunohistochemistry, Immunofluorescence and ELISA research applications. |
| Applications | WB, IHC-P, IF-P, ELISA |
| Host/Source | Rabbit |
| Reactivity | Human, Mouse, Rat |

PRODUCT PROPERTIES

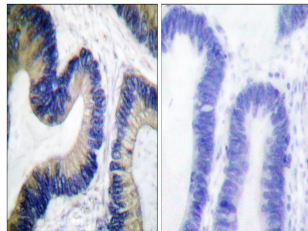
| | |
|----------------------------|--|
| Clonality | Polyclonal |
| Clone ID | |
| Concentration | 1 mg/mL |
| Conjugation | Unconjugated |
| Purification | The antibody was affinity-purified from rabbit anti-serum by affinity-chromatography. |
| Dilution | WB 1:500-1:2000 |
| Range | IHC 1:100-1:300 ELISA 1:10000 |
| Formulation | PBS, 50% Glycerol, 0.5% BSA and 0.02% Sodium Azide. |
| Isotype | IgG |
| Storage Instruction | Store at -20°C for up to 1 year from the date of receipt, and avoid repeat freeze-thaw cycles. |

TARGET INFORMATION

| | |
|---------------------------|--|
| Gene ID | 1978 |
| Gene Symbol | EIF4EBP1 |
| Uniprot ID | 4EBP1_HUMAN |
| Immunogen | The antiserum was produced against synthesized peptide derived from human 4E-BP1 around the phosphorylation site of Ser64 at amino acid range 30-79 |
| Immunogen Region | 40-120 |
| Specificity | Phospho-EIF4EBP1-Ser65 polyclonal antibody (Eukaryotic Translation Initiation Factor 4e-Binding Protein 1) binds to endogenous Eukaryotic Translation Initiation Factor 4e-Binding Protein 1 at the amino acid region 40-120 only when phosphorylated at S |
| Immunogen Sequence | |



Western blot analysis of lysates from Jurkat cells treated with Insulin 0.01U/ml 15', using 4E-BP1 (Phospho-Ser64) Antibody. The lane on the right is blocked with the phospho peptide.



Immunohistochemistry analysis of paraffin-embedded human colon carcinoma, using 4E-BP1 (Phospho-Ser64) Antibody. The picture on the right is blocked with the phospho peptide.

This product is suitable for in-vitro studies under the RESEARCH USE ONLY [RUO] licence. This product must not be used as for diagnostic or other medical purposes.
St John's Laboratory Ltd, Knowledge Dock Business Centre, University Way, London, E16 2RD | Tel: 0208 223 3081