

Anti-Phospho-ALK-Tyr1507 antibody (1450-1530) (STJ90845)

STJ90845

GENERAL INFORMATION

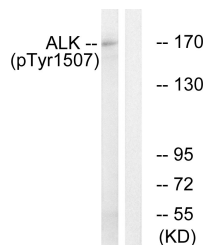
Product Type	Primary antibodies
Short Description	Rabbit polyclonal antibody anti-Phospho-ALK Tyrosine Kinase Receptor-Tyr1507 (1450-1530) is suitable for use in Western Blot, Immunohistochemistry, Immunofluorescence and ELISA research applications.
Applications	WB, IHC-P, IF-P, ELISA
Host/Source	Rabbit
Reactivity	Human, Mouse, Monkey

PRODUCT PROPERTIES

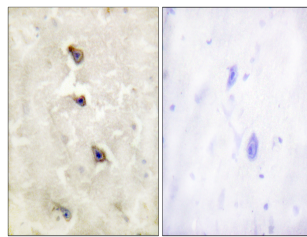
Clonality	Polyclonal
Clone ID	
Concentration	1 mg/mL
Conjugation	Unconjugated
Purification	The antibody was affinity-purified from rabbit anti-serum by affinity-chromatography.
Dilution Range	WB 1:500-1:2000 IHC 1:100-1:300 ELISA 1:5000
Formulation	PBS, 50% Glycerol, 0.5% BSA and 0.02% Sodium Azide.
Isotype	IgG
Storage Instruction	Store at 20°C for up to 1 year from the date of receipt, and avoid repeat freeze-thaw cycles.

TARGET INFORMATION

Gene ID	238
Gene Symbol	ALK
Uniprot ID	ALK_HUMAN
Immunogen	The antiserum was produced against synthesized peptide derived from human ALK around the phosphorylation site of Tyr1507 at amino acid range 1473-1522
Immunogen Region	1450-1530
Specificity	Phospho-ALK-Tyr1507 polyclonal antibody (ALK Tyrosine Kinase Receptor) binds to endogenous ALK Tyrosine Kinase Receptor at the amino acid region 1450-1530 only when phosphorylated at Tyr1507.
Immunogen Sequence	



Western blot analysis of lysates from COS7 cells treated with anisomycin 25ug/ml 30', using ALK (Phospho-Tyr1507) Antibody. The lane on the right is blocked with the phospho peptide.



Immunohistochemistry analysis of paraffin-embedded human brain, using ALK (Phospho-Tyr1507) Antibody. The picture on the right is blocked with the phospho peptide.

This product is suitable for in-vitro studies under the RESEARCH USE ONLY [RUO] licence. This product must not be used as for diagnostic or other medical purposes.
St John's Laboratory Ltd, Knowledge Dock Business Centre, University Way, London, E16 2RD | Tel: 0208 223 3081