

Anti-Phospho-BCL2L11-Ser59 antibody (1-80) (STJ91225)

STJ91225

GENERAL INFORMATION

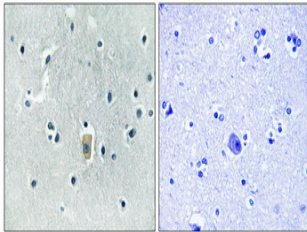
Product Type	Primary antibodies
Short Description	Rabbit polyclonal antibody anti-Phospho-Bcl-2-Like Protein 11-Ser59 (1-80) is suitable for use in Immunohistochemistry, Immunofluorescence and ELISA research applications.
Applications	IHC-P, IF-P, ELISA
Host/Source	Rabbit
Reactivity	Human, Mouse, Rat

PRODUCT PROPERTIES

Clonality	Polyclonal
Clone ID	
Concentration	1 mg/mL
Conjugation	Unconjugated
Purification	The antibody was affinity-purified from rabbit anti-serum by affinity-chromatography.
Dilution Range	IHC 1:100-1:300 ELISA 1:40000
Formulation	PBS, 50% Glycerol, 0.5% BSA and 0.02% Sodium Azide.
Isotype	IgG
Storage	Store at -20°C for up to 1 year from the date of receipt, and avoid repeat freeze-thaw cycles.
Instruction	

TARGET INFORMATION

Gene ID	10018
Gene Symbol	BCL2L11
Uniprot ID	B2L11_HUMAN
Immunogen	The antiserum was produced against synthesized peptide derived from human BIM around the phosphorylation site of Ser59 at amino acid range 31-80
Immunogen Region	1-80
Specificity	Phospho-BCL2L11-Ser59 polyclonal antibody (Bcl-2-Like Protein 11) binds to endogenous Bcl-2-Like Protein 11 at the amino acid region 1-80 only when phosphorylated at Ser59.
Immunogen Sequence	



Immunohistochemical analysis of paraffin-embedded Human brain. Antibody was diluted at 1:100 (4°C overnight). High-pressure and temperature Tris-EDTA, pH8.0 was used for antigen retrieval. Negative control (right) obtained from antibody was pre-absorbed by immunogen peptide.

This product is suitable for in-vitro studies under the RESEARCH USE ONLY [RUO] licence. This product must not be used as for diagnostic or other medical purposes.
St John's Laboratory Ltd, Knowledge Dock Business Centre, University Way, London, E16 2RD | Tel: 0208 223 3081