

Anti-Phospho-SYN1-Ser605 antibody (550-630) (STJ91309)

STJ91309

GENERAL INFORMATION

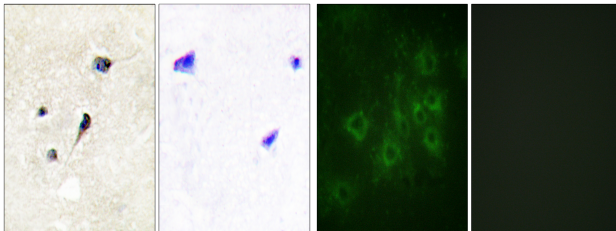
Product Type	Primary antibodies
Short Description	Rabbit polyclonal antibody anti-Phospho-Synapsin-1-Ser605 (550-630) is suitable for use in Immunohistochemistry, Immunofluorescence, Immunocytochemistry and ELISA research applications.
Applications	IHC-P, IF, ICC, ELISA
Host/Source	Rabbit
Reactivity	Human, Mouse, Rat

PRODUCT PROPERTIES

Clonality	Polyclonal
Clone ID	
Concentration	1 mg/mL
Conjugation	Unconjugated
Purification	The antibody was affinity-purified from rabbit anti-serum by affinity-chromatography.
Dilution Range	IHC 1:100-1:300 IF 1:200-1:1000 ELISA 1:20000
Formulation	PBS, 50% Glycerol, 0.5% BSA and 0.02% Sodium Azide.
Isotype	IgG
Storage Instruction	Store at -20°C for up to 1 year from the date of receipt, and avoid repeat freeze-thaw cycles.

TARGET INFORMATION

Gene ID	6853
Gene Symbol	SYN1
Uniprot ID	SYN1_HUMAN
Immunogen	The antiserum was produced against synthesized peptide derived from human Synapsin1 around the phosphorylation site of Ser605 at amino acid range 576-625
Immunogen Region	550-630
Specificity	Phospho-SYN1-Ser605 polyclonal antibody (Synapsin-1) binds to endogenous Synapsin-1 at the amino acid region 550-630 only when phosphorylated at Ser605.
Immunogen Sequence	



Immunohistochemistry analysis of paraffin-embedded human brain, using Synapsin1 (Phospho-Ser605) Antibody. The picture on the right is blocked with the phospho peptide.

Immunofluorescence analysis of COS7 cells, using Synapsin1 (Phospho-Ser605) Antibody. The picture on the right is blocked with the phospho peptide.

This product is suitable for in-vitro studies under the RESEARCH USE ONLY [RUO] licence. This product must not be used as for diagnostic or other medical purposes.
St John's Laboratory Ltd, Knowledge Dock Business Centre, University Way, London, E16 2RD | Tel: 0208 223 3081