

Anti-Phospho-ERK 1/2-Thr202/Y204 antibody (140-220) (STJ91357)

STJ91357

GENERAL INFORMATION

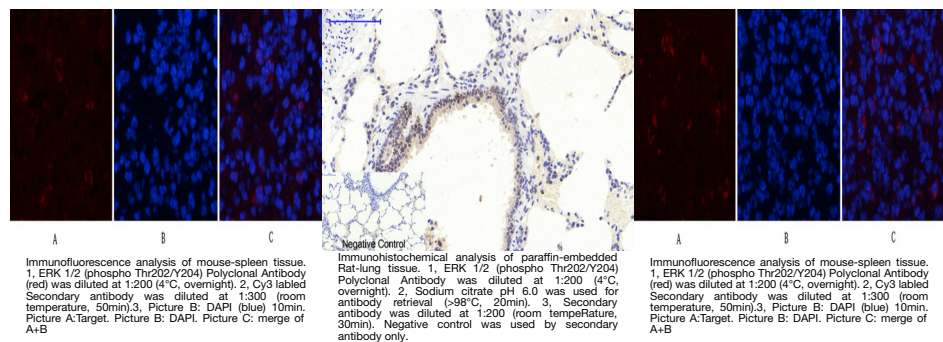
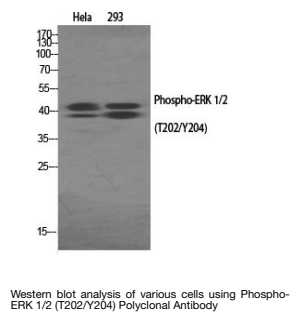
Product Type	Primary antibodies
Short Description	Rabbit polyclonal antibody anti-Phospho-Mitogen-activated protein kinase 3 and Mitogen-activated protein kinase 1-Thr202/Y204 (140-220) is suitable for use in Immunofluorescence, Immunocytochemistry, Western Blot, Immunohistochemistry and ELISA resea
Applications	IF, ICC, WB, IHC-P, ELISA
Host/Source	Rabbit
Reactivity	Human, Mouse, Rat

PRODUCT PROPERTIES

Clonality	Polyclonal
Clone ID	
Concentration	1 mg/mL
Conjugation	Unconjugated
Purification	The antibody was affinity-purified from rabbit anti-serum by affinity-chromatography.
Dilution Range	IF 1:50-200 WB 1:500-1:2000 IHC 1:100-1:300 ELISA 1:20000
Formulation	PBS, 50% Glycerol, 0.5% BSA and 0.02% Sodium Azide.
Isotype	IgG
Storage Instruction	Store at -20°C for up to 1 year from the date of receipt, and avoid repeat freeze-thaw cycles.

TARGET INFORMATION

Gene ID	5594 5595
Gene Symbol	MAPK1 MAPK3
Uniprot ID	MK01_HUMAN MK03_HUMAN
Immunogen	Synthesized phospho-peptide around the phosphorylation site of human ERK 1/2 (phospho Thr202/Y204)
Immunogen Region	140-220
Specificity	Phospho-ERK 1/2-Thr202/Y204 polyclonal antibody (Mitogen-activated protein kinase 3 and Mitogen-activated protein kinase 1) binds to endogenous Mitogen-activated protein kinase 3 and Mitogen-activated protein kinase 1 at the amino acid region 140-220
Immunogen Sequence	



This product is suitable for in-vitro studies under the RESEARCH USE ONLY [RUO] licence. This product must not be used as for diagnostic or other medical purposes.
St John's Laboratory Ltd, Knowledge Dock Business Centre, University Way, London, E16 2RD | Tel: 0208 223 3081