

Anti-ACTBL2 antibody (50-130 Internal) (STJ91470)

STJ91470

GENERAL INFORMATION

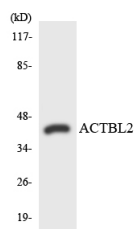
Product Type	Primary antibodies
Short Description	Rabbit polyclonal antibody anti-Beta-Actin-Like Protein 2 (50-130 Internal) is suitable for use in Western Blot and ELISA research applications.
Applications	WB, ELISA
Host/Source	Rabbit
Reactivity	Human, Mouse

PRODUCT PROPERTIES

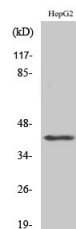
Clonality	Polyclonal
Clone ID	
Concentration	1 mg/mL
Conjugation	Unconjugated
Purification	The antibody was affinity-purified from rabbit anti-serum by affinity-chromatography.
Dilution Range	WB 1:500-1:2000 ELISA 1:20000
Formulation	PBS, 50% Glycerol, 0.5% BSA and 0.02% Sodium Azide.
Isotype	IgG
Storage Instruction	Store at -20°C for up to 1 year from the date of receipt, and avoid repeat freeze-thaw cycles.

TARGET INFORMATION

Gene ID	345651
Gene Symbol	ACTBL2
Uniprot ID	ACTBL_HUMAN
Immunogen	The antiserum was produced against synthesized peptide derived from human ACTBL2 at amino acid range 81-130
Immunogen Region	50-130 Internal
Specificity	ACTBL2 polyclonal antibody (Beta-Actin-Like Protein 2) binds to endogenous Beta-Actin-Like Protein 2 at the amino acid region 50-130 Internal.
Immunogen Sequence	



Western blot analysis of the lysates from HUVEC cells using ACTBL2 antibody.



Western blot analysis of various cells using Actin-Kappa Polyclonal Antibody

This product is suitable for in-vitro studies under the RESEARCH USE ONLY [RUO] licence. This product must not be used as for diagnostic or other medical purposes.
St John's Laboratory Ltd, Knowledge Dock Business Centre, University Way, London, E16 2RD | Tel: 0208 223 3081