

## Anti-PYCARD antibody (10-90 N-Term) (STJ91730)

STJ91730

### GENERAL INFORMATION

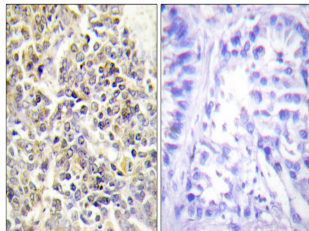
<b>Product Type</b>	Primary antibodies
<b>Short Description</b>	Rabbit polyclonal antibody anti-Apoptosis-Associated Speck-Like Protein Containing A Card (10-90 N-Term) is suitable for use in Western Blot, Immunohistochemistry, Immunofluorescence, Immunocytochemistry and ELISA research applications.
<b>Applications</b>	WB, IHC-P, IF, ICC, ELISA
<b>Host/Source</b>	Rabbit
<b>Reactivity</b>	Human, Mouse, Rat

### PRODUCT PROPERTIES

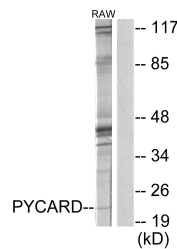
<b>Clonality</b>	Polyclonal
<b>Clone ID</b>	
<b>Concentration</b>	1 mg/mL
<b>Conjugation</b>	Unconjugated
<b>Purification</b>	The antibody was affinity-purified from rabbit anti-serum by affinity-chromatography.
<b>Dilution Range</b>	WB 1:500-1:2000 IHC 1:100-1:300 IF 1:200-1:1000 ELISA 1:40000
<b>Formulation</b>	PBS, 50% Glycerol, 0.5% BSA and 0.02% Sodium Azide.
<b>Isotype</b>	IgG
<b>Storage Instruction</b>	Store at -20°C for up to 1 year from the date of receipt, and avoid repeat freeze-thaw cycles.

### TARGET INFORMATION

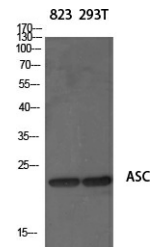
<b>Gene ID</b>	29108
<b>Gene Symbol</b>	PYCARD
<b>Uniprot ID</b>	ASC_HUMAN
<b>Immunogen</b>	The antiserum was produced against synthesized peptide derived from human ASC at amino acid range 10-59
<b>Immunogen Region</b>	10-90 N-Term
<b>Specificity</b>	PYCARD polyclonal antibody (Apoptosis-Associated Speck-Like Protein Containing A Card) binds to endogenous Apoptosis-Associated Speck-Like Protein Containing A Card at the amino acid region 10-90 N-Term.
<b>Immunogen Sequence</b>	



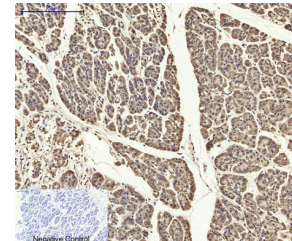
Immunohistochemistry analysis of paraffin-embedded human lung carcinoma tissue, using ASC Antibody. The picture on the right is blocked with the synthesized peptide.



Western blot analysis of lysates from RAW264.7 cells, using ASC Antibody. The lane on the right is blocked with the synthesized peptide.



Western blot analysis of various cells using ASC Polyclonal Antibody diluted at 1: 500



Immunohistochemical analysis of paraffin-embedded Human-stomach-cancer tissue. 1, ASC Polyclonal Antibody was diluted at 1:200 (4°C, overnight). 2, Sodium citrate pH 6.0 was used for antibody retrieval (-95°C, 20min). 3, Secondary antibody was diluted at 1:200 (room temperature, 30min). Negative control was used by secondary antibody only.

This product is suitable for in-vitro studies under the RESEARCH USE ONLY [RUO] licence. This product must not be used as for diagnostic or other medical purposes.  
St John's Laboratory Ltd, Knowledge Dock Business Centre, University Way, London, E16 2RD | Tel: 0208 223 3081