

Anti-BUB1 antibody (750-830 Internal) (STJ91911)

STJ91911

GENERAL INFORMATION

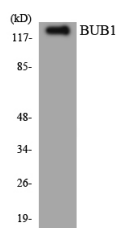
| | |
|--------------------------|---|
| Product Type | Primary antibodies |
| Short Description | Rabbit polyclonal antibody anti-Mitotic Checkpoint Serine/Threonine-Protein Kinase Bub1 (750-830 Internal) is suitable for use in Western Blot and ELISA research applications. |
| Applications | WB, ELISA |
| Host/Source | Rabbit |
| Reactivity | Human, Rat, Mouse |

PRODUCT PROPERTIES

| | |
|----------------------|--|
| Clonality | Polyclonal |
| Clone ID | |
| Concentration | 1 mg/mL |
| Conjugation | Unconjugated |
| Purification | The antibody was affinity-purified from rabbit anti-serum by affinity-chromatography. |
| Dilution | WB 1:500-1:2000 |
| Range | ELISA 1:40000 |
| Formulation | PBS, 50% Glycerol, 0.5% BSA and 0.02% Sodium Azide. |
| Isotype | IgG |
| Storage | Store at -20°C for up to 1 year from the date of receipt, and avoid repeat freeze-thaw cycles. |
| Instruction | |

TARGET INFORMATION

| | |
|---------------------------|---|
| Gene ID | 699 |
| Gene Symbol | BUB1 |
| Uniprot ID | BUB1_HUMAN |
| Immunogen | The antiserum was produced against synthesized peptide derived from human BUB1 at amino acid range 781-830 |
| Immunogen Region | 750-830 Internal |
| Specificity | BUB1 polyclonal antibody (Mitotic Checkpoint Serine/Threonine-Protein Kinase Bub1) binds to endogenous Mitotic Checkpoint Serine/Threonine-Protein Kinase Bub1 at the amino acid region 750-830 Internal. |
| Immunogen Sequence | |



Western blot analysis of the lysates from HUVEC cells using BUB1 antibody.

This product is suitable for in-vitro studies under the RESEARCH USE ONLY [RUO] licence. This product must not be used as for diagnostic or other medical purposes.
St John's Laboratory Ltd, Knowledge Dock Business Centre, University Way, London, E16 2RD | Tel: 0208 223 3081