

Anti-BUB1 antibody (220-300 Internal) (STJ91912)

STJ91912

GENERAL INFORMATION

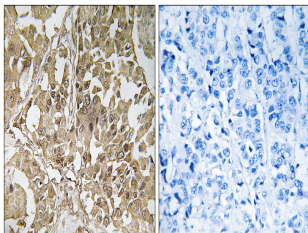
Product Type	Primary antibodies
Short Description	Rabbit polyclonal antibody anti-Mitotic Checkpoint Serine/Threonine-Protein Kinase Bub1 (220-300 Internal) is suitable for use in Immunohistochemistry, Immunofluorescence and ELISA research applications.
Applications	IHC-P, IF-P, ELISA
Host/Source	Rabbit
Reactivity	Human, Mouse

PRODUCT PROPERTIES

Clonality	Polyclonal
Clone ID	
Concentration	1 mg/mL
Conjugation	Unconjugated
Purification	The antibody was affinity-purified from rabbit anti-serum by affinity-chromatography.
Dilution	IHC 1:100-1:300
Range	ELISA 1:10000
Formulation	PBS, 50% Glycerol, 0.5% BSA and 0.02% Sodium Azide.
Isotype	IgG
Storage	Store at -20°C for up to 1 year from the date of receipt, and avoid repeat freeze-thaw cycles.
Instruction	

TARGET INFORMATION

Gene ID	699
Gene Symbol	BUB1
Uniprot ID	BUB1_HUMAN
Immunogen	The antiserum was produced against synthesized peptide derived from human BUB1 at amino acid range 251-300
Immunogen Region	220-300 Internal
Specificity	BUB1 polyclonal antibody (Mitotic Checkpoint Serine/Threonine-Protein Kinase Bub1) binds to endogenous Mitotic Checkpoint Serine/Threonine-Protein Kinase Bub1 at the amino acid region 220-300 Internal.
Immunogen Sequence	



Immunohistochemistry analysis of paraffin-embedded human breast carcinoma tissue, using BUB1 Antibody. The picture on the right is blocked with the synthesized peptide.