

Anti-COL13A1 antibody (610-690 C-Term) (STJ92376)

STJ92376

GENERAL INFORMATION

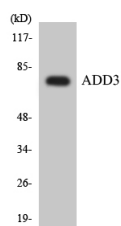
Product Type	Primary antibodies
Short Description	Rabbit polyclonal antibody anti-Collagen Alpha-1 (Xiii Chain (610-690 C-Term) is suitable for use in Immunofluorescence, Immunocytochemistry and ELISA research applications.
Applications	IF, ICC, ELISA
Host/Source	Rabbit
Reactivity	Human, Mouse

PRODUCT PROPERTIES

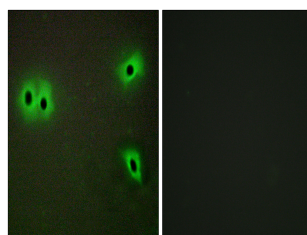
Clonality	Polyclonal
Clone ID	
Concentration	1 mg/mL
Conjugation	Unconjugated
Purification	The antibody was affinity-purified from rabbit anti-serum by affinity-chromatography.
Dilution Range	IF 1:200-1:1000 ELISA 1:20000
Formulation	PBS, 50% Glycerol, 0.5% BSA and 0.02% Sodium Azide.
Isotype	IgG
Storage	Store at -20°C for up to 1 year from the date of receipt, and avoid repeat freeze-thaw cycles.
Instruction	

TARGET INFORMATION

Gene ID	1305
Gene Symbol	COL13A1
Uniprot ID	CODA1_HUMAN
Immunogen	The antiserum was produced against synthesized peptide derived from human Collagen XIII alpha1 at amino acid range 641-690
Immunogen Region	610-690 C-Term
Specificity	COL13A1 polyclonal antibody (Collagen Alpha-1 (Xiii Chain) binds to endogenous Collagen Alpha-1 (Xiii Chain at the amino acid region 610-690 C-Term.
Immunogen Sequence	



Western blot analysis of the lysates from HT-29 cells using ADD3 antibody.



Immunofluorescence analysis of A549 cells, using Collagen XIII alpha1 Antibody. The picture on the right is blocked with the synthesized peptide.

This product is suitable for in-vitro studies under the RESEARCH USE ONLY [RUO] licence. This product must not be used as for diagnostic or other medical purposes.
St John's Laboratory Ltd, Knowledge Dock Business Centre, University Way, London, E16 2RD | Tel: 0208 223 3081