

Anti-COL3A1 antibody (50-130 N-Term) (STJ92388)

STJ92388

GENERAL INFORMATION

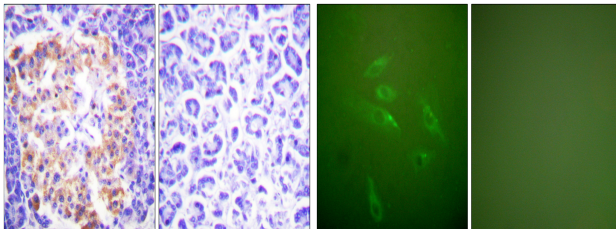
Product Type	Primary antibodies
Short Description	Rabbit polyclonal antibody anti-Collagen Alpha-1 (Iii Chain (50-130 N-Term) is suitable for use in Western Blot, Immunohistochemistry, Immunofluorescence, Immunocytochemistry and ELISA research applications.
Applications	WB, IHC-P, IF, ICC, ELISA
Host/Source	Rabbit
Reactivity	Human, Mouse, Rat

PRODUCT PROPERTIES

Clonality	Polyclonal
Clone ID	
Concentration	1 mg/mL
Conjugation	Unconjugated
Purification	The antibody was affinity-purified from rabbit anti-serum by affinity-chromatography.
Dilution Range	WB 1:500-1:2000 IHC 1:100-1:300 IF 1:200-1:1000 ELISA 1:10000
Formulation	PBS, 50% Glycerol, 0.5% BSA and 0.02% Sodium Azide.
Isotype	IgG
Storage Instruction	Store at -20°C for up to 1 year from the date of receipt, and avoid repeat freeze-thaw cycles.

TARGET INFORMATION

Gene ID	1281
Gene Symbol	COL3A1
Uniprot ID	CO3A1_HUMAN
Immunogen	The antiserum was produced against synthesized peptide derived from human Collagen III at amino acid range 81-130
Immunogen Region	50-130 N-Term
Specificity	COL3A1 polyclonal antibody (Collagen Alpha-1 (Iii Chain) binds to endogenous Collagen Alpha-1 (Iii Chain at the amino acid region 50-130 N-Term.
Immunogen Sequence	



Immunohistochemistry analysis of paraffin-embedded human pancreas tissue, using Collagen III Antibody. The picture on the right is blocked with the synthesized peptide.

Immunofluorescence analysis of HeLa cells, using Collagen III Antibody. The picture on the right is blocked with the synthesized peptide.

This product is suitable for in-vitro studies under the RESEARCH USE ONLY [RUO] licence. This product must not be used as for diagnostic or other medical purposes.
St John's Laboratory Ltd, Knowledge Dock Business Centre, University Way, London, E16 2RD | Tel: 0208 223 3081