

Anti-DCLK2 antibody (1-80 N-Term) (STJ92663)

STJ92663

GENERAL INFORMATION

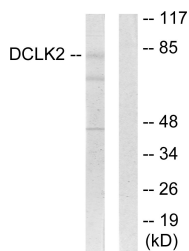
Product Type	Primary antibodies
Short Description	Rabbit polyclonal antibody anti-Serine/Threonine-Protein Kinase Dclk2 (1-80 N-Term) is suitable for use in Western Blot, Immunofluorescence, Immunocytochemistry and ELISA research applications.
Applications	WB, IF, ICC, ELISA
Host/Source	Rabbit
Reactivity	Human, Mouse

PRODUCT PROPERTIES

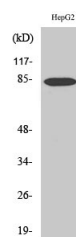
Clonality	Polyclonal
Clone ID	
Concentration	1 mg/mL
Conjugation	Unconjugated
Purification	The antibody was affinity-purified from rabbit anti-serum by affinity-chromatography.
Dilution Range	WB 1:500-1:2000 IF 1:200-1:1000 ELISA 1:10000
Formulation	PBS, 50% Glycerol, 0.5% BSA and 0.02% Sodium Azide.
Isotype	IgG
Storage Instruction	Store at -20°C for up to 1 year from the date of receipt, and avoid repeat freeze-thaw cycles.

TARGET INFORMATION

Gene ID	166614
Gene Symbol	DCLK2
Uniprot ID	DCLK2_HUMAN
Immunogen	The antiserum was produced against synthesized peptide derived from human DCLK2 at amino acid range 1-50
Immunogen Region	1-80 N-Term
Specificity	DCLK2 polyclonal antibody (Serine/Threonine-Protein Kinase Dclk2) binds to endogenous Serine/Threonine-Protein Kinase Dclk2 at the amino acid region 1-80 N-Term.
Immunogen Sequence	



Western blot analysis of lysates from HepG2 cells, using DCLK2 Antibody. The lane on the right is blocked with the synthesized peptide.



Western blot analysis of various cells using DCAMK2 Polyclonal Antibody

This product is suitable for in-vitro studies under the RESEARCH USE ONLY [RUO] licence. This product must not be used as for diagnostic or other medical purposes.
St John's Laboratory Ltd, Knowledge Dock Business Centre, University Way, London, E16 2RD | Tel: 0208 223 3081