

## Anti-DES antibody (390-470 C-Term) (STJ92691)

STJ92691

### GENERAL INFORMATION

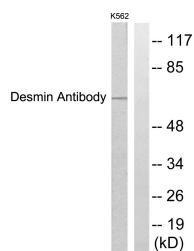
|                          |   |
|--------------------------|---|
| <b>Product Type</b>      | Primary antibodies  |
| <b>Short Description</b> | Rabbit polyclonal antibody anti-Desmin (390-470 C-Term) is suitable for use in Western Blot, Immunohistochemistry, Immunofluorescence, Immunocytochemistry and ELISA research applications. |
| <b>Applications</b>      | WB, IHC-P, IF, ICC, ELISA   |
| <b>Host/Source</b>       | Rabbit  |
| <b>Reactivity</b>        | Human, Mouse, Rat   |

### PRODUCT PROPERTIES

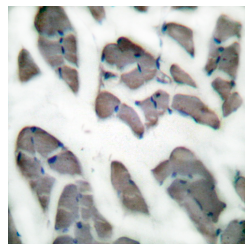
|                            |  |
|----------------------------|--|
| <b>Clonality</b>           | Polyclonal   |
| <b>Clone ID</b>            |  |
| <b>Concentration</b>       | 1 mg/mL  |
| <b>Conjugation</b>         | Unconjugated   |
| <b>Purification</b>        | The antibody was affinity-purified from rabbit anti-serum by affinity-chromatography.          |
| <b>Dilution Range</b>      | WB 1:500-1:2000<br>IHC 1:100-1:300<br>IF 1:200-1:1000<br>ELISA 1:10000                         |
| <b>Formulation</b>         | PBS, 50% Glycerol, 0.5% BSA and 0.02% Sodium Azide.  |
| <b>Isotype</b>             | IgG  |
| <b>Storage Instruction</b> | Store at -20°C for up to 1 year from the date of receipt, and avoid repeat freeze-thaw cycles. |

### TARGET INFORMATION

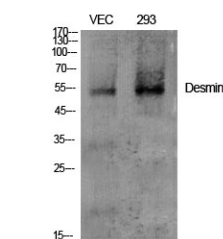
|                           |  |
|---------------------------|--|
| <b>Gene ID</b>            | 1674   |
| <b>Gene Symbol</b>        | DES  |
| <b>Uniprot ID</b>         | DESM_HUMAN   |
| <b>Immunogen</b>          | The antiserum was produced against synthesized peptide derived from human Desmin at amino acid range 421-470 |
| <b>Immunogen Region</b>   | 390-470 C-Term   |
| <b>Specificity</b>        | DES polyclonal antibody (Desmin) binds to endogenous Desmin at the amino acid region 390-470 C-Term.         |
| <b>Immunogen Sequence</b> |  |



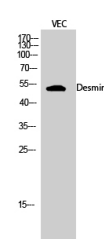
Western blot analysis of lysates from K562 cells, using Desmin Antibody. The lane on the right is blocked with the synthesized peptide.



Immunohistochemistry analysis of paraffin-embedded human skeletal muscle tissue, using Desmin Antibody. The picture on the right is blocked with the synthesized peptide.



Western blot analysis of various cells using Desmin Polyclonal Antibody diluted at 1: 2000



Western blot analysis of VEC cells using Desmin Polyclonal Antibody diluted at 1: 2000

This product is suitable for in-vitro studies under the RESEARCH USE ONLY [RUO] licence. This product must not be used as for diagnostic or other medical purposes.  
St John's Laboratory Ltd, Knowledge Dock Business Centre, University Way, London, E16 2RD | Tel: 0208 223 3081