

Anti-DES antibody (40-120) (STJ92692)

STJ92692

GENERAL INFORMATION

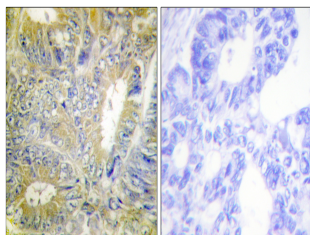
Product Type	Primary antibodies
Short Description	Rabbit polyclonal antibody anti-Desmin (40-120) is suitable for use in Western Blot, Immunohistochemistry, Immunofluorescence and ELISA research applications.
Applications	WB, IHC-P, IF-P, ELISA
Host/Source	Rabbit
Reactivity	Human, Mouse, Rat

PRODUCT PROPERTIES

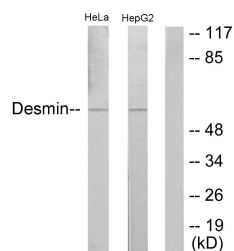
Clonality	Polyclonal
Clone ID	
Concentration	1 mg/mL
Conjugation	Unconjugated
Purification	The antibody was affinity-purified from rabbit anti-serum by affinity-chromatography.
Dilution Range	WB 1:500-1:2000 IHC 1:100-1:300 ELISA 1:20000
Formulation	PBS, 50% Glycerol, 0.5% BSA and 0.02% Sodium Azide.
Isotype	IgG
Storage Instruction	Store at -20°C for up to 1 year from the date of receipt, and avoid repeat freeze-thaw cycles.

TARGET INFORMATION

Gene ID	1674
Gene Symbol	DES
Uniprot ID	DESM_HUMAN
Immunogen	The antiserum was produced against synthesized peptide derived from human Desmin at amino acid range 26-75
Immunogen Region	40-120
Specificity	DES polyclonal antibody (Desmin) binds to endogenous Desmin at the amino acid region 40-120.
Immunogen Sequence	



Immunohistochemistry analysis of paraffin-embedded human colon carcinoma tissue, using Desmin Antibody. The picture on the right is blocked with the synthesized peptide.



Western blot analysis of lysates from HeLa and HepG2 cells, using Desmin Antibody. The lane on the right is blocked with the synthesized peptide.



Western blot analysis of various cells using Desmin Polyclonal Antibody