

Anti-ELOVL1 antibody (70-150 Internal) (STJ92900)

STJ92900

GENERAL INFORMATION

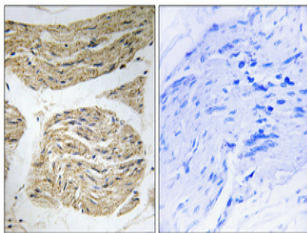
Product Type	Primary antibodies
Short Description	Rabbit polyclonal antibody anti-Elongation Of Very Long Chain Fatty Acids Protein 1 (70-150 Internal) is suitable for use in Western Blot, Immunohistochemistry, Immunofluorescence and ELISA research applications.
Applications	WB, IHC-P, IF-P, ELISA
Host/Source	Rabbit
Reactivity	Human, Mouse

PRODUCT PROPERTIES

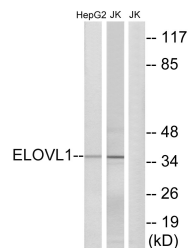
Clonality	Polyclonal
Clone ID	
Concentration	1 mg/mL
Conjugation	Unconjugated
Purification	The antibody was affinity-purified from rabbit anti-serum by affinity-chromatography.
Dilution	WB 1:500-1:2000
Range	ELISA 1:40000
Formulation	PBS, 50% Glycerol, 0.5% BSA and 0.02% Sodium Azide.
Isotype	IgG
Storage	Store at -20°C for up to 1 year from the date of receipt, and avoid repeat freeze-thaw cycles.
Instruction	

TARGET INFORMATION

Gene ID	64834
Gene Symbol	ELOVL1
Uniprot ID	ELOV1_HUMAN
Immunogen	The antiserum was produced against synthesized peptide derived from human ELOVL1 at amino acid range 101-150
Immunogen Region	70-150 Internal
Specificity	ELOVL1 polyclonal antibody (Elongation Of Very Long Chain Fatty Acids Protein 1) binds to endogenous Elongation Of Very Long Chain Fatty Acids Protein 1 at the amino acid region 70-150 Internal.
Immunogen Sequence	



Immunohistochemical analysis of paraffin-embedded Human skeletal muscle. Antibody was diluted at 1:100 (4°C overnight). High-pressure and temperature Tris-EDTA, pH8.0 was used for antigen retrieval. Negative control (right) obtained from antibody was pre-absorbed by immunogen peptide.



Western blot analysis of lysates from Jurkat and HepG2 cells, using ELOVL1 Antibody. The lane on the right is blocked with the synthesized peptide.



Western blot analysis of various cells using ELOVL1 Polyclonal Antibody diluted at 1: 1000