

Anti-GSK3B antibody (1-80) (STJ93447)

STJ93447

GENERAL INFORMATION

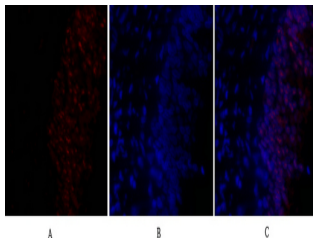
Product Type	Primary antibodies
Short Description	Rabbit polyclonal antibody anti-Glycogen Synthase Kinase-3 Beta (1-80) is suitable for use in Immunofluorescence, Immunocytochemistry, Western Blot, Immunohistochemistry, Immunoprecipitation and ELISA research applications.
Applications	IF, ICC, WB, IHC-P, IP, ELISA
Host/Source	Rabbit
Reactivity	Human, Mouse, Rat

PRODUCT PROPERTIES

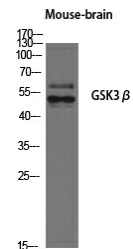
Clonality	Polyclonal
Clone ID	
Concentration	1 mg/mL
Conjugation	Unconjugated
Purification	The antibody was affinity-purified from rabbit anti-serum by affinity-chromatography.
Dilution	IF 1:50-200
Range	WB 1:500-1:2000 IHC 1:100-1:300 IP 2-5 ug/mg ELISA 1:20000
Formulation	PBS, 50% Glycerol, 0.5% BSA and 0.02% Sodium Azide.
Isotype	IgG
Storage Instruction	Store at -20°C for up to 1 year from the date of receipt, and avoid repeat freeze-thaw cycles.

TARGET INFORMATION

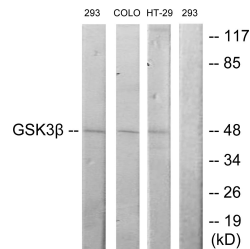
Gene ID	2932
Gene Symbol	GSK3B
Uniprot ID	GSK3B_HUMAN
Immunogen	The antiserum was produced against synthesized peptide derived from human GSK3B at amino acid range 1-50
Immunogen Region	1-80
Specificity	GSK3B polyclonal antibody (Glycogen Synthase Kinase-3 Beta) binds to endogenous Glycogen Synthase Kinase-3 Beta at the amino acid region 1-80.
Immunogen Sequence	



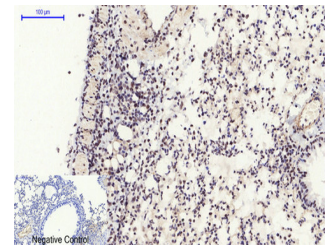
Immunofluorescence analysis of rat-lung tissue. 1. GSK3 Beta Polyclonal Antibody (red) was diluted at 1:200 (4°C, overnight). 2. Cy3 labeled Secondary antibody was diluted at 1:300 (room temperature, 50min). 3. Picture B: DAPI (blue) 10min. Picture A: Target. Picture B: DAPI. Picture C: merge of A+B



Western blot analysis of NIH-3T3 cells using GSK3 Beta Polyclonal Antibody diluted at 1: 2000



Western blot analysis of lysates from 293, COLO205, and HT29 cells, using GSK3 beta Antibody. The lane on the right is blocked with the synthesized peptide.



Immunohistochemical analysis of paraffin-embedded Mouse-lung tissue. 1. GSK3 Beta Polyclonal Antibody was diluted at 1:200 (4°C, overnight). 2. Sodium citrate pH 6.0 was used for antibody retrieval (>98°C, 20min). 3. Secondary antibody was diluted at 1:200 (room temperature, 30min). Negative control was used by secondary antibody only.

This product is suitable for in-vitro studies under the RESEARCH USE ONLY [RUO] licence. This product must not be used as for diagnostic or other medical purposes.
St John's Laboratory Ltd, Knowledge Dock Business Centre, University Way, London, E16 2RD | Tel: 0208 223 3081