

Anti-MAP4K1 antibody (340-420 Internal) (STJ93590)

STJ93590

GENERAL INFORMATION

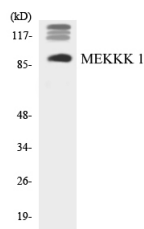
Product Type	Primary antibodies
Short Description	Rabbit polyclonal antibody anti-Mitogen-Activated Protein Kinase Kinase Kinase Kinase 1 (340-420 Internal) is suitable for use in Western Blot, Immunohistochemistry, Immunofluorescence and ELISA research applications.
Applications	WB, IHC-P, IF-P, ELISA
Host/Source	Rabbit
Reactivity	Human, Mouse

PRODUCT PROPERTIES

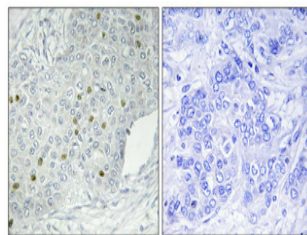
Clonality	Polyclonal
Clone ID	
Concentration	1 mg/mL
Conjugation	Unconjugated
Purification	The antibody was affinity-purified from rabbit anti-serum by affinity-chromatography.
Dilution	WB 1:500-1:2000
Range	ELISA 1:10000
Formulation	PBS, 50% Glycerol, 0.5% BSA and 0.02% Sodium Azide.
Isotype	IgG
Storage	Store at -20°C for up to 1 year from the date of receipt, and avoid repeat freeze-thaw cycles.
Instruction	

TARGET INFORMATION

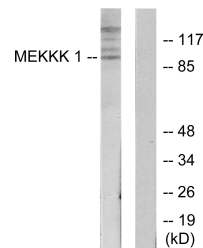
Gene ID	11184
Gene Symbol	MAP4K1
Uniprot ID	M4K1_HUMAN
Immunogen	The antiserum was produced against synthesized peptide derived from human MEKKK 1 at amino acid range 371-420
Immunogen Region	340-420 Internal
Specificity	MAP4K1 polyclonal antibody (Mitogen-Activated Protein Kinase Kinase Kinase Kinase 1) binds to endogenous Mitogen-Activated Protein Kinase Kinase Kinase Kinase 1 at the amino acid region 340-420 Internal.
Immunogen Sequence	



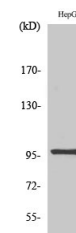
Western blot analysis of the lysates from HUVEC cells using MEKKK 1 antibody.



Immunohistochemical analysis of paraffin-embedded Human breast cancer. Antibody was diluted at 1:100 (4°C overnight). High-pressure and temperature Tris-EDTA, pH8.0 was used for antigen retrieval. Negative control (right) obtained from antibody was pre-absorbed by immunogen peptide.



Western blot analysis of lysates from HepG2 cells, using MEKKK 1 Antibody. The lane on the right is blocked with the synthesized peptide.



Western blot analysis of various cells using HPK1 Polyclonal Antibody diluted at 1: 1000