

## Anti-IL17RA antibody (110-190 Internal) (STJ93683)

STJ93683

### GENERAL INFORMATION

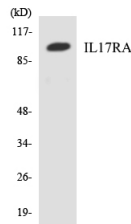
<b>Product Type</b>	Primary antibodies
<b>Short Description</b>	Rabbit polyclonal antibody anti-Interleukin-17 Receptor A (110-190 Internal) is suitable for use in Western Blot and ELISA research applications.
<b>Applications</b>	WB, ELISA
<b>Host/Source</b>	Rabbit
<b>Reactivity</b>	Human, Mouse

### PRODUCT PROPERTIES

<b>Clonality</b>	Polyclonal
<b>Clone ID</b>	
<b>Concentration</b>	1 mg/mL
<b>Conjugation</b>	Unconjugated
<b>Purification</b>	The antibody was affinity-purified from rabbit anti-serum by affinity-chromatography.
<b>Dilution Range</b>	WB 1:500-1:2000 ELISA 1:40000
<b>Formulation</b>	PBS, 50% Glycerol, 0.5% BSA and 0.02% Sodium Azide.
<b>Isotype</b>	IgG
<b>Storage Instruction</b>	Store at -20°C for up to 1 year from the date of receipt, and avoid repeat freeze-thaw cycles.

### TARGET INFORMATION

<b>Gene ID</b>	<a href="#">23765</a>
<b>Gene Symbol</b>	<a href="#">IL17RA</a>
<b>Uniprot ID</b>	<a href="#">I17RA_HUMAN</a>
<b>Immunogen</b>	The antiserum was produced against synthesized peptide derived from human IL17RA at amino acid range 141-190
<b>Immunogen Region</b>	110-190 Internal
<b>Specificity</b>	IL17RA polyclonal antibody (Interleukin-17 Receptor A) binds to endogenous Interleukin-17 Receptor A at the amino acid region 110-190 Internal.
<b>Immunogen Sequence</b>	



Western blot analysis of the lysates from HeLa cells using IL17RA antibody.