

Anti-SLC24A4 antibody (300-380 Internal) (STJ94359)

STJ94359

GENERAL INFORMATION

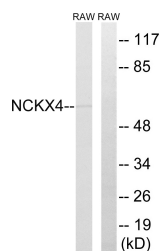
Product Type	Primary antibodies
Short Description	Rabbit polyclonal antibody anti-Sodium/Potassium/Calcium Exchanger 4 (300-380 Internal) is suitable for use in Western Blot and ELISA research applications.
Applications	WB, ELISA
Host/Source	Rabbit
Reactivity	Human, Mouse, Rat

PRODUCT PROPERTIES

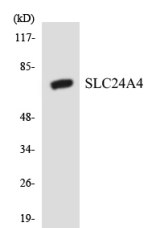
Clonality	Polyclonal
Clone ID	
Concentration	1 mg/mL
Conjugation	Unconjugated
Purification	The antibody was affinity-purified from rabbit anti-serum by affinity-chromatography.
Dilution Range	WB 1:500-1:2000 ELISA 1:40000
Formulation	PBS, 50% Glycerol, 0.5% BSA and 0.02% Sodium Azide.
Isotype	IgG
Storage Instruction	Store at -20°C for up to 1 year from the date of receipt, and avoid repeat freeze-thaw cycles.

TARGET INFORMATION

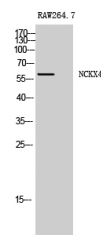
Gene ID	123041
Gene Symbol	SLC24A4
Uniprot ID	NCKX4_HUMAN
Immunogen	The antiserum was produced against synthesized peptide derived from human SLC24A4 at amino acid range 328-377
Immunogen Region	300-380 Internal
Specificity	SLC24A4 polyclonal antibody (Sodium/Potassium/Calcium Exchanger 4) binds to endogenous Sodium/Potassium/Calcium Exchanger 4 at the amino acid region 300-380 Internal.
Immunogen Sequence	



Western blot analysis of lysates from RAW264.7 cells, using SLC24A4 Antibody. The lane on the right is blocked with the synthesized peptide.



Western blot analysis of the lysates from HeLa cells using SLC24A4 antibody.



Western blot analysis of RAW264.7 cells using NCKX4 Polyclonal Antibody