

Anti-ARHGEF5 antibody (160-240 Internal) (STJ94826)

STJ94826

GENERAL INFORMATION

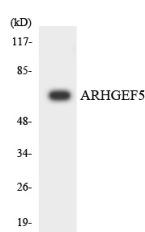
Product Type	Primary antibodies
Short Description	Rabbit polyclonal antibody anti-Rho Guanine Nucleotide Exchange Factor 5 (160-240 Internal) is suitable for use in Western Blot and ELISA research applications.
Applications	WB, ELISA
Host/Source	Rabbit
Reactivity	Human, Mouse, Rat

PRODUCT PROPERTIES

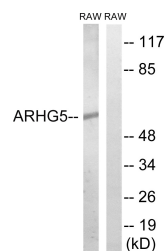
Clonality	Polyclonal
Clone ID	
Concentration	1 mg/mL
Conjugation	Unconjugated
Purification	The antibody was affinity-purified from rabbit anti-serum by affinity-chromatography.
Dilution Range	WB 1:500-1:2000 ELISA 1:20000
Formulation	PBS, 50% Glycerol, 0.5% BSA and 0.02% Sodium Azide.
Isotype	IgG
Storage	Store at -20°C for up to 1 year from the date of receipt, and avoid repeat freeze-thaw cycles.
Instruction	

TARGET INFORMATION

Gene ID	7984
Gene Symbol	ARHGEF5
Uniprot ID	ARHG5_HUMAN
Immunogen	The antiserum was produced against synthesized peptide derived from human ARHGEF5 at amino acid range 191-240
Immunogen Region	160-240 Internal
Specificity	ARHGEF5 polyclonal antibody (Rho Guanine Nucleotide Exchange Factor 5) binds to endogenous Rho Guanine Nucleotide Exchange Factor 5 at the amino acid region 160-240 Internal.
Immunogen Sequence	



Western blot analysis of the lysates from K562 cells using ARHGEF5 antibody.



Western blot analysis of lysates from RAW264.7 cells, using ARHGEF5 Antibody. The lane on the right is blocked with the synthesized peptide.

This product is suitable for in-vitro studies under the RESEARCH USE ONLY [RUO] licence. This product must not be used as for diagnostic or other medical purposes.
St John's Laboratory Ltd, Knowledge Dock Business Centre, University Way, London, E16 2RD | Tel: 0208 223 3081