

Anti-HCRTR1 antibody (270-350 Internal) (STJ94837)

STJ94837

GENERAL INFORMATION

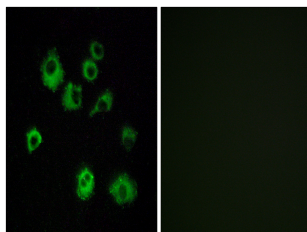
Product Type	Primary antibodies
Short Description	Rabbit polyclonal antibody anti-Orexin/Hypocretin Receptor Type 1 (270-350 Internal) is suitable for use in Immunofluorescence, Immunocytochemistry and ELISA research applications.
Applications	IF, ICC, ELISA
Host/Source	Rabbit
Reactivity	Human, Mouse, Rat

PRODUCT PROPERTIES

Clonality	Polyclonal
Clone ID	
Concentration	1 mg/mL
Conjugation	Unconjugated
Purification	The antibody was affinity-purified from rabbit anti-serum by affinity-chromatography.
Dilution Range	IF 1:200-1:1000 ELISA 1:20000
Formulation	PBS, 50% Glycerol, 0.5% BSA and 0.02% Sodium Azide.
Isotype	IgG
Storage	Store at -20°C for up to 1 year from the date of receipt, and avoid repeat freeze-thaw cycles.
Instruction	

TARGET INFORMATION

Gene ID	3061
Gene Symbol	HCRTR1
Uniprot ID	OX1R_HUMAN
Immunogen	The antiserum was produced against synthesized peptide derived from human HCRTR1 at amino acid range 298-347
Immunogen Region	270-350 Internal
Specificity	HCRTR1 polyclonal antibody (Orexin/Hypocretin Receptor Type 1) binds to endogenous Orexin/Hypocretin Receptor Type 1 at the amino acid region 270-350 Internal.
Immunogen Sequence	



Immunofluorescence analysis of MCF7 cells, using HCRTR1 Antibody. The picture on the right is blocked with the synthesized peptide.

This product is suitable for in-vitro studies under the RESEARCH USE ONLY [RUO] licence. This product must not be used as for diagnostic or other medical purposes.
St John's Laboratory Ltd, Knowledge Dock Business Centre, University Way, London, E16 2RD | Tel: 0208 223 3081