

Anti-SEC16A antibody (980-1060 Internal) (STJ95593)

STJ95593

GENERAL INFORMATION

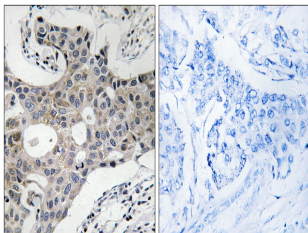
Product Type	Primary antibodies
Short Description	Rabbit polyclonal antibody anti-Protein Transport Protein Sec16a (980-1060 Internal) is suitable for use in Immunohistochemistry, Immunofluorescence and ELISA research applications.
Applications	IHC-P, IF-P, ELISA
Host/Source	Rabbit
Reactivity	Human, Rat, Mouse

PRODUCT PROPERTIES

Clonality	Polyclonal
Clone ID	
Concentration	1 mg/mL
Conjugation	Unconjugated
Purification	The antibody was affinity-purified from rabbit anti-serum by affinity-chromatography.
Dilution Range	IHC 1:100-1:300 ELISA 1:20000
Formulation	PBS, 50% Glycerol, 0.5% BSA and 0.02% Sodium Azide.
Isotype	IgG
Storage	Store at -20°C for up to 1 year from the date of receipt, and avoid repeat freeze-thaw cycles.
Instruction	

TARGET INFORMATION

Gene ID	9919
Gene Symbol	SEC16A
Uniprot ID	SC16A_HUMAN
Immunogen	The antiserum was produced against synthesized peptide derived from human SEC16A at amino acid range 1013-1062
Immunogen Region	980-1060 Internal
Specificity	SEC16A polyclonal antibody (Protein Transport Protein Sec16a) binds to endogenous Protein Transport Protein Sec16a at the amino acid region 980-1060 Internal.
Immunogen Sequence	



Immunohistochemistry analysis of paraffin-embedded human breast carcinoma, using SEC16A Antibody. The picture on the right is blocked with the synthesized peptide.