

Anti-KRT19 antibody (321-370 C-Term) (STJ96714)

STJ96714

GENERAL INFORMATION

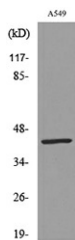
Product Type	Primary antibodies
Short Description	Rabbit polyclonal antibody anti-Keratin-Type I Cytoskeletal 19 (321-370 C-Term) is suitable for use in Western Blot, Immunohistochemistry, Immunofluorescence and ELISA research applications.
Applications	WB, IHC-P, IF-P, ELISA
Host/Source	Rabbit
Reactivity	Human, Rat, Mouse

PRODUCT PROPERTIES

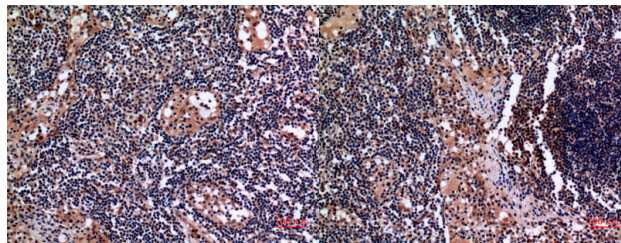
Clonality	Polyclonal
Clone ID	
Concentration	1 mg/mL
Conjugation	Unconjugated
Purification	The antibody was affinity-purified from rabbit anti-serum by affinity-chromatography.
Dilution Range	WB 1:500-1:2000 IHC 1:100-1:300 ELISA 1:20000
Formulation	PBS, 50% Glycerol, 0.5% BSA and 0.02% Sodium Azide.
Isotype	IgG
Storage Instruction	Store at -20°C for up to 1 year from the date of receipt, and avoid repeat freeze-thaw cycles.

TARGET INFORMATION

Gene ID	3880
Gene Symbol	KRT19
Uniprot ID	K1C19_HUMAN
Immunogen	The antiserum was produced against synthesized peptide derived from the C-terminal region of human KRT19 at amino acid range 321-370
Immunogen Region	321-370 C-Term
Specificity	KRT19 polyclonal antibody (Keratin-Type I Cytoskeletal 19) binds to endogenous Keratin-Type I Cytoskeletal 19 at the amino acid region 321-370 C-Term.
Immunogen Sequence	

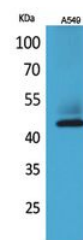


Western blot analysis of lysate from A549 cells, using KRT19 Antibody.



Immunohistochemical analysis of paraffin-embedded human-lymph-gland, antibody was diluted at 1:100

Immunohistochemical analysis of paraffin-embedded human-lymph-gland, antibody was diluted at 1:100



Western blot analysis of A549 cells using Cytokeratin 19 Polyclonal Antibody. Secondary antibody was diluted at 1:20000

This product is suitable for in-vitro studies under the RESEARCH USE ONLY [RUO] licence. This product must not be used as for diagnostic or other medical purposes.
St John's Laboratory Ltd, Knowledge Dock Business Centre, University Way, London, E16 2RD | Tel: 0208 223 3081