

Anti-TUBB1 antibody [3F7] (STJ96939)

STJ96939

GENERAL INFORMATION

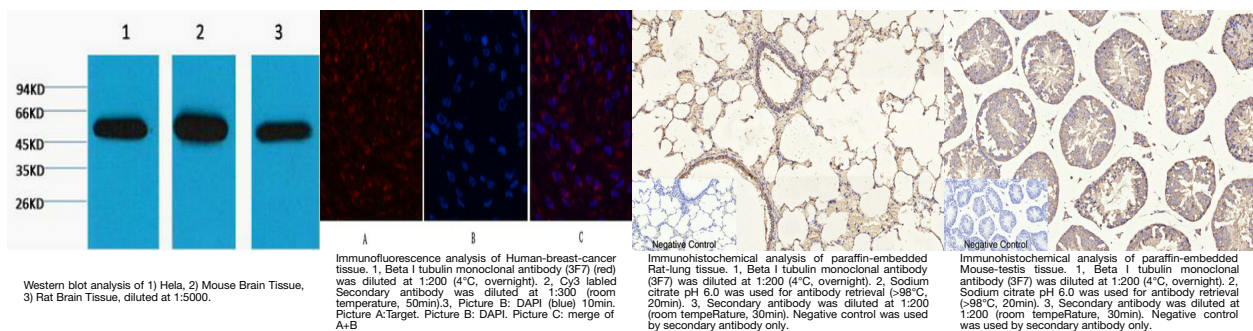
Product Type	Primary antibodies
Short Description	Mouse monoclonal antibody anti-Tubulin Beta-1 Chain is suitable for use in Western Blot, Immunohistochemistry, Immunofluorescence and Immunocytochemistry research applications.
Applications	WB, IHC-P, IF, ICC
Host/Source	Mouse
Reactivity	Human, Rat, Mouse

PRODUCT PROPERTIES

Clonality	Monoclonal
Clone ID	3F7
Concentration	
Conjugation	Unconjugated
Purification	The antibody was isolated from ascitic fluid by immunoaffinity chromatography using antigens coupled to agarose beads.
Dilution Range	WB 1:500-10000 IF 1:200 IHC 1:50-300
Formulation	PBS, pH 7.4, 0.5% BSA, 0.02% Sodium Azide and 50% Glycerol.
Isotype	IgG1
Storage Instruction	Store at -20°C for up to 1 year from the date of receipt, and avoid repeat freeze-thaw cycles.

TARGET INFORMATION

Gene ID	81027
Gene Symbol	TUBB1
Uniprot ID	TBB1_HUMAN
Immunogen	Synthetic peptide of Beta I tubulin
Immunogen Region	
Specificity	The antibody detects endogenous Beta I tubulin proteins.
Immunogen Sequence	



This product is suitable for in-vitro studies under the RESEARCH USE ONLY [RUO] licence. This product must not be used as for diagnostic or other medical purposes.
St John's Laboratory Ltd, Knowledge Dock Business Centre, University Way, London, E16 2RD | Tel: 0208 223 3081