

## Anti-GAPDH antibody [2B8] (STJ96942)

STJ96942

### GENERAL INFORMATION

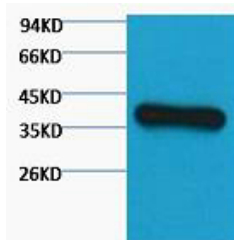
<b>Product Type</b>	Primary antibodies
<b>Short Description</b>	Mouse monoclonal antibody anti-Glyceraldehyde-3-Phosphate Dehydrogenase is suitable for use in Western Blot research applications.
<b>Applications</b>	WB
<b>Host/Source</b>	Mouse
<b>Reactivity</b>	Human, Rat, Mouse, Simian, Dog, Chicken, Hamster, Rabbit, Pig, Sheep

### PRODUCT PROPERTIES

<b>Clonality</b>	Monoclonal
<b>Clone ID</b>	2B8
<b>Concentration</b>	
<b>Conjugation</b>	Unconjugated
<b>Purification</b>	The antibody was isolated from ascitic fluid by immunoaffinity chromatography using antigens coupled to agarose beads.
<b>Dilution Range</b>	WB 1:2000-5000
<b>Formulation</b>	PBS, pH 7.4, 0.5% BSA, 0.02% Sodium Azide and 50% Glycerol.
<b>Isotype</b>	IgG1
<b>Storage Instruction</b>	Store at -20°C for up to 1 year from the date of receipt, and avoid repeat freeze-thaw cycles.

### TARGET INFORMATION

<b>Gene ID</b>	<a href="#">2597</a>
<b>Gene Symbol</b>	<a href="#">GAPDH</a>
<b>Uniprot ID</b>	<a href="#">G3P_HUMAN</a>
<b>Immunogen</b>	Synthetic peptide of GAPDH
<b>Immunogen Region</b>	
<b>Specificity</b>	GAPDH monoclonal antibody (Glyceraldehyde-3-Phosphate Dehydrogenase) binds to endogenous Glyceraldehyde-3-Phosphate Dehydrogenase.
<b>Immunogen Sequence</b>	



Western blot analysis of HeLa, diluted at 1:3000.