

Anti-Myosin Heavy Chain antibody [11C2] (STJ96960)

STJ96960

GENERAL INFORMATION

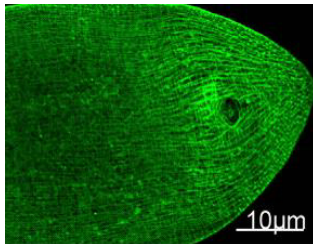
Product Type	Primary antibodies
Short Description	Mouse monoclonal antibody anti-Myosin Heavy Chain is suitable for use in Immunofluorescence and Immunocytochemistry research applications.
Applications	IF, ICC
Host/Source	Mouse
Reactivity	Human, Mouse, Rat, D.melanogaster, Nematode

PRODUCT PROPERTIES

Clonality	Monoclonal
Clone ID	11C2
Concentration	
Conjugation	Unconjugated
Purification	The antibody was isolated from ascitic fluid by immunoaffinity chromatography using antigens coupled to agarose beads.
Dilution Range	IF 1:100
Formulation	PBS, pH 7.4, 0.5% BSA, 0.02% Sodium Azide and 50% Glycerol.
Isotype	IgG1
Storage Instruction	Store at -20°C for up to 1 year from the date of receipt, and avoid repeat freeze-thaw cycles.

TARGET INFORMATION

Gene ID	
Gene Symbol	
Uniprot ID	
Immunogen	Synthetic peptide of Myosin Heavy Chain
Immunogen Region	
Specificity	Myosin Heavy Chain monoclonal antibody (Myosin Heavy Chain) binds to endogenous Myosin Heavy Chain.
Immunogen Sequence	



Immunofluorescence Staining of nematode tissue with MYH mouse mAb (11C2) diluted at 1:100. (Provide by Tsinghua University).

This product is suitable for in-vitro studies under the RESEARCH USE ONLY [RUO] licence. This product must not be used as for diagnostic or other medical purposes.
St John's Laboratory Ltd, Knowledge Dock Business Centre, University Way, London, E16 2RD | Tel: 0208 223 3081