

Mouse Anti-Rabbit IgG Fc Heavy Chain antibody {Unconjugated} (STJ97069)

STJ97069

GENERAL INFORMATION

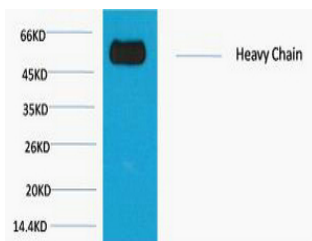
| | |
|--------------------------|---|
| Product Type | Secondary antibodies |
| Short Description | Unconjugated mouse monoclonal anti-Rabbit IgG Fc Heavy Chain secondary antibody. For use in most research applications. |
| Applications | WB |
| Host/Source | Mouse |
| Reactivity | Rabbit |

PRODUCT PROPERTIES

| | |
|----------------------------|--|
| Clonality | Monoclonal |
| Clone ID | 1E1 |
| Concentration | |
| Conjugation | Unconjugated |
| Purification | The antibody was isolated from ascitic fluid by immunoaffinity chromatography using antigens coupled to agarose beads. |
| Dilution Range | WB 1:2000-5000 |
| Formulation | PBS, pH 7.4, 0.5% BSA, 0.02% Sodium Azide and 50% Glycerol. |
| Isotype | IgG1 |
| Storage Instruction | Store at -20°C for up to 1 year from the date of receipt, and avoid repeat freeze-thaw cycles. |

TARGET INFORMATION

| | |
|---------------------------|---|
| Gene ID | |
| Gene Symbol | |
| Uniprot ID | |
| Immunogen | Recombinant Protein of Rabbit IgG (Fc specific, Heavy Chain) |
| Immunogen Region | |
| Specificity | The antibody reacts with the Fc portion of rabbit IgG heavy chain but not with the Fab portion of rabbit immunoglobulins. The antibody may cross-react with immunoglobulins from other species. |
| Immunogen Sequence | |



Western blot analysis of Reduced Rabbit IgG, H+L, diluted at 1:10000.

This product is suitable for in-vitro studies under the RESEARCH USE ONLY [RUO] licence. This product must not be used as for diagnostic or other medical purposes.
 St John's Laboratory Ltd, Knowledge Dock Business Centre, University Way, London, E16 2RD | Tel: 0208 223 3081