

Mouse Anti-Rabbit IgG Light Chain antibody {Unconjugated} (STJ97070)

STJ97070

GENERAL INFORMATION

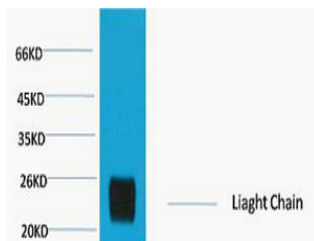
Product Type	Secondary antibodies
Short Description	Unconjugated mouse monoclonal anti-Rabbit IgG Light Chain secondary antibody. For use in most research applications.
Applications	WB
Host/Source	Mouse
Reactivity	Rabbit

PRODUCT PROPERTIES

Clonality	Monoclonal
Clone ID	8D6
Concentration	
Conjugation	Unconjugated
Purification	The antibody was isolated from ascitic fluid by immunoaffinity chromatography using antigens coupled to agarose beads.
Dilution Range	WB 1:2000-5000
Formulation	PBS, pH 7.4, 0.5% BSA, 0.02% Sodium Azide and 50% Glycerol.
Isotype	IgG1
Storage Instruction	Store at -20°C for up to 1 year from the date of receipt, and avoid repeat freeze-thaw cycles.

TARGET INFORMATION

Gene ID	
Gene Symbol	
Uniprot ID	
Immunogen	Recombinant Protein of Rabbit IgG (Light Chain Specific)
Immunogen Region	
Specificity	The antibody reacts with the light chains on rabbit IgG and with those common to other rabbit immunoglobulins. The antibody does not react with the heavy chain of rabbit IgG. The antibody minimal cross
Immunogen Sequence	



This product is suitable for in-vitro studies under the RESEARCH USE ONLY [RUO] licence. This product must not be used as for diagnostic or other medical purposes.
 St John's Laboratory Ltd, Knowledge Dock Business Centre, University Way, London, E16 2RD | Tel: 0208 223 3081