

Anti-Bovine Serum Albumin antibody [Mix-mA] (STJ97461)

STJ97461

GENERAL INFORMATION

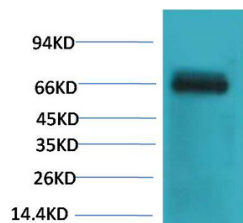
Product Type	Primary antibodies
Short Description	Mouse monoclonal antibody anti-Bovine Serum Albumin is suitable for use in Western Blot research applications.
Applications	WB
Host/Source	Mouse
Reactivity	Bovine

PRODUCT PROPERTIES

Clonality	Monoclonal
Clone ID	Mix-mA
Concentration	
Conjugation	Unconjugated
Purification	The antibody was isolated from ascitic fluid by immunoaffinity chromatography using antigens coupled to agarose beads.
Dilution Range	WB 1:1000-2000
Formulation	PBS, pH 7.4, 0.5% BSA, 0.02% Sodium Azide and 50% Glycerol.
Isotype	IgG1
Storage Instruction	Store at -20°C for up to 1 year from the date of receipt, and avoid repeat freeze-thaw cycles.

TARGET INFORMATION

Gene ID	
Gene Symbol	
Uniprot ID	
Immunogen	Purified Protein
Immunogen Region	
Specificity	Bovine Serum Albumin monoclonal antibody (Bovine Serum Albumin) binds to endogenous Bovine Serum Albumin.
Immunogen Sequence	



Western blot analysis of Bovine Serum Albumin using Bovine Serum Albumin monoclonal antibody.

This product is suitable for in-vitro studies under the RESEARCH USE ONLY [RUO] licence. This product must not be used as for diagnostic or other medical purposes.
St John's Laboratory Ltd, Knowledge Dock Business Centre, University Way, London, E16 2RD | Tel: 0208 223 3081