

## Anti-TUBG1 antibody [4A4] (STJ97744)

STJ97744

### GENERAL INFORMATION

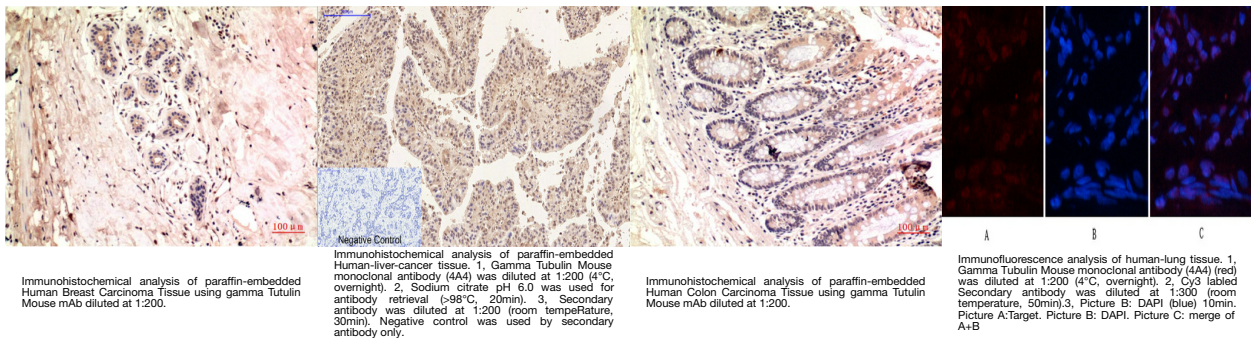
<b>Product Type</b>	Primary antibodies
<b>Short Description</b>	Mouse monoclonal antibody anti-Tubulin Gamma-1 Chain is suitable for use in Immunofluorescence, Immunocytochemistry and Immunohistochemistry research applications.
<b>Applications</b>	IF, ICC, IHC-P
<b>Host/Source</b>	Mouse
<b>Reactivity</b>	Human

### PRODUCT PROPERTIES

<b>Clonality</b>	Monoclonal
<b>Clone ID</b>	4A4
<b>Concentration</b>	1 mg/mL
<b>Conjugation</b>	Unconjugated
<b>Purification</b>	The antibody was isolated from ascitic fluid by immunoaffinity chromatography using antigens coupled to agarose beads.
<b>Dilution Range</b>	IF 1:50-200 WB 500-2000 1:100-200
<b>Formulation</b>	PBS, 50% Glycerol, 0.5% BSA and 0.02% Sodium Azide.
<b>Isotype</b>	IgG1
<b>Storage Instruction</b>	Store at -20°C for up to 1 year from the date of receipt, and avoid repeat freeze-thaw cycles.

### TARGET INFORMATION

<b>Gene ID</b>	7283
<b>Gene Symbol</b>	TUBG1
<b>Uniprot ID</b>	TBG1_HUMAN
<b>Immunogen</b>	Synthetic peptide of Gamma Tubulin
<b>Immunogen Region</b>	
<b>Specificity</b>	TUBG1 monoclonal antibody (Tubulin Gamma-1 Chain) binds to endogenous Tubulin Gamma-1 Chain.
<b>Immunogen Sequence</b>	



This product is suitable for in-vitro studies under the RESEARCH USE ONLY [RUO] licence. This product must not be used as for diagnostic or other medical purposes.  
St John's Laboratory Ltd, Knowledge Dock Business Centre, University Way, London, E16 2RD | Tel: 0208 223 3081