

Anti-Luciferase antibody [6B8] (STJ97752)

STJ97752

GENERAL INFORMATION

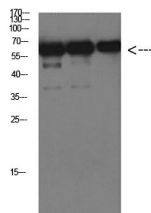
Product Type	Primary antibodies
Short Description	Mouse monoclonal antibody anti-Luciferin 4-monoxygenase is suitable for use in Immunofluorescence, Immunocytochemistry and Western Blot research applications.
Applications	IF, ICC, WB
Host/Source	Mouse
Reactivity	Firefly

PRODUCT PROPERTIES

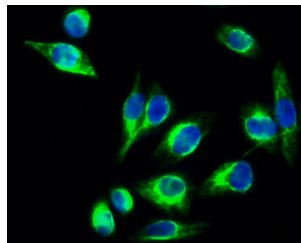
Clonality	Monoclonal
Clone ID	6B8
Concentration	1 mg/mL
Conjugation	Unconjugated
Purification	The antibody was isolated from ascitic fluid by immunoaffinity chromatography using antigens coupled to agarose beads.
Dilution Range	IF 1:50-200 WB 1:1000-2000
Formulation	PBS, 50% Glycerol, 0.5% BSA and 0.02% Sodium Azide.
Isotype	IgG1
Storage	Store at -20°C for up to 1 year from the date of receipt, and avoid repeat freeze-thaw cycles.
Instruction	

TARGET INFORMATION

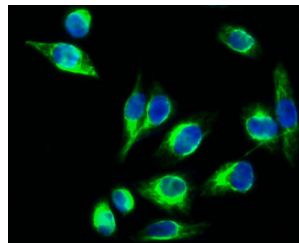
Gene ID	
Gene Symbol	
Uniprot ID	
Immunogen	Recombinant Protein of Luciferase of Luciferase
Immunogen Region	
Specificity	Luciferase monoclonal antibody (Luciferin 4-monoxygenase) binds to endogenous Luciferin 4-monoxygenase.
Immunogen Sequence	



Western blot analysis of over-expressed Luciferase protein using antibody diluted at 1:1000



Immunofluorescence analysis of HepG2 cells. Antibody diluted at 1:50. The picture on the right is blocked with the synthesized peptide.



Immunofluorescence analysis of HEK293T cells transfected with Luciferase. 1. Luciferase Mouse monoclonal antibody (6B8) (green) was diluted at 1:200 (4°C, overnight). 2. Dylight 488 labeled Secondary antibody was diluted at 1:300 room temperature, 30min. DAPI (blue) 10min.

This product is suitable for in-vitro studies under the RESEARCH USE ONLY [RUO] licence. This product must not be used as for diagnostic or other medical purposes.
St John's Laboratory Ltd, Knowledge Dock Business Centre, University Way, London, E16 2RD | Tel: 0208 223 3081