

## Anti-Luciferase antibody [9D6] (STJ97764)

STJ97764

### GENERAL INFORMATION

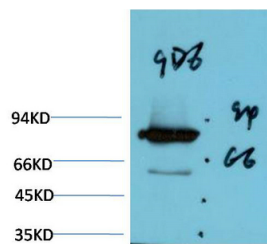
|                          |   |
|--------------------------|---|
| <b>Product Type</b>      | Primary antibodies  |
| <b>Short Description</b> | Mouse monoclonal antibody anti-Luciferin 4-monooxygenase is suitable for use in Western Blot research applications. |
| <b>Applications</b>      | WB  |
| <b>Host/Source</b>       | Mouse   |
| <b>Reactivity</b>        | Firefly   |

### PRODUCT PROPERTIES

|                            |  |
|----------------------------|--|
| <b>Clonality</b>           | Monoclonal   |
| <b>Clone ID</b>            | 9D6  |
| <b>Concentration</b>       | 1 mg/mL  |
| <b>Conjugation</b>         | Unconjugated   |
| <b>Purification</b>        | The antibody was isolated from ascitic fluid by immunoaffinity chromatography using antigens coupled to agarose beads. |
| <b>Dilution Range</b>      | WB 1:1000-2000   |
| <b>Formulation</b>         | PBS, 50% Glycerol, 0.5% BSA and 0.02% Sodium Azide.  |
| <b>Isotype</b>             | IgG1   |
| <b>Storage Instruction</b> | Store at -20°C for up to 1 year from the date of receipt, and avoid repeat freeze-thaw cycles.                         |

### TARGET INFORMATION

|                           |   |
|---------------------------|---|
| <b>Gene ID</b>            |   |
| <b>Gene Symbol</b>        |   |
| <b>Uniprot ID</b>         |   |
| <b>Immunogen</b>          | Synthetic peptide of Luciferase   |
| <b>Immunogen Region</b>   |   |
| <b>Specificity</b>        | Luciferase monoclonal antibody (Luciferin 4-monooxygenase) binds to endogenous Luciferin 4-monooxygenase. |
| <b>Immunogen Sequence</b> |   |



Western blot analysis of Firefly Luciferase Transfected HeLa Cell Lysate using Luciferase Mouse mAb diluted at 1:2000.

This product is suitable for in-vitro studies under the RESEARCH USE ONLY [RUO] licence. This product must not be used as for diagnostic or other medical purposes.

St John's Laboratory Ltd, Knowledge Dock Business Centre, University Way, London, E16 2RD | Tel: 0208 223 3081